

Kāwhia Community Board

Notice is hereby given that an ordinary meeting of the Kāwhia Community Board will be held in the Kāwhia Community Hall, 141 Jervois Street, Kāwhia on Thursday, 5 December 2024 commencing at 4.00pm.

Tanya Winter, Chief Executive

29 November 2024



OPEN TO THE PUBLIC AGENDA

Kāwhia Community Board membership

Chairperson	Geoff Good
Deputy Chairperson	Hinga Whiu
Ōtorohanga District Councillor	Kit Jeffries
Board Member	Richard Harpur
Board Member	Dave Walsh

All attendees at this meeting are advised that the meeting will be electronically recorded (audio and video) for the purpose of webcasting to the Council's YouTube channel. Every care will be taken to maintain individuals' privacy however attendees are advised they may be recorded as part of the general meeting proceedings.

Public forum

The purpose of the forum is to provide an opportunity at the start of all ordinary public meetings of the Boards, for members of the community to come along and speak to their elected representatives. This reflects the Board's desire to see more public participation in decision making and meeting procedures.

To speak at the Public Forum please use the [online form](#) on our website. Each speaker will be allocated a maximum of 5 minutes speaking time.

Role of the Community Board

The Kāwhia Community Board (the Board) is a separate entity to Ōtorohanga District Council. The role of a community board is set out in Section 52 of the Local Government Act 2002 and is summarised below.

1. Represent, and act as an advocate for, the interests of the Kāwhia and Aotea community.
2. Consider and report on all matters referred to it by the Council, or any matter of interest or concern to the Board.
3. Maintain an overview of services provided by the Council within the Kāwhia and Aotea community.
4. Prepare an annual submission to the Council for expenditure within the community.
5. Communicate with community organisations and special interest groups within the Kāwhia and Aotea community.
6. Undertake any other responsibilities that are delegated to it by the Council.

Delegations by Ōtorohanga District Council

The Council is authorised to delegate powers to the Board and has made the following specific delegations to be exercised in accordance with Council policy.

Power to act – Reserve Funds

Full decision-making authority on the use of the Kāwhia Reserve Funds in accordance with the Terms of Reference.

Power to act - Discretionary Fund

Full decision-making authority on the use of the Board's discretionary fund in accordance with the Terms of Reference for the Fund.

Power to recommend – Long Term Plan/Annual Plan/Policy issues

Authority to make a submission to the Long Term Plan/Annual Plan process on activities, service levels and expenditure (including capital works priorities) with the Board's area or to make a submission in relation to any policy matter which may have an effect with the Board's area.

Power to recommend – Advocacy/Submission to other agencies

Authority to recommend to the Council on inclusions to submissions/advocacy to external organisations.

Opening formalities

Commencement of meeting	Te tīmatanga o te hui	5
Opening prayer/reflection/words of wisdom	Karakia/huitao/whakataukī	5
Apologies	Ngā hōnea	5
Public forum	Hui tūmatanui	5
Late items	Ngā take tōmuri	6
Declaration of conflict of interest	Te whakapuakanga pānga taharua	6
Confirmation of minutes	Te whakaū i ngā meneti	6

Decision reports**Ngā pūrongo whakatau**

Item 29	Update on consultation on the removal of pohutukawa trees, Kāwhia	16
---------	---	----

Information only reports**Ngā pūrongo mōhiohio anake**

Item 30	Kāwhia/Aotea/Ōpārau Concept Plan – Implementation Update December 2024	61
Item 31	Aotea Seawall resource consent renewal update	66

Public excluded**Take matatapu**

There are no reports.

Other business**Ētahi atu take**

Board Member updates	72
Board projects	72
Community Board discretionary fund	72

Resolution Register	72
---------------------	----

Closing formalities

Closing prayer/reflection/words of wisdom

Karakia/huritao/whakataukī

73

Meeting closure

Katinga o te hui

73

Workshops/briefings

There are no scheduled workshops or briefings.

Please note: The reports attached to this Open Agenda set out recommendations and suggested resolutions only. Those recommendations and suggested resolutions DO NOT represent Ōtorohanga District Council views or policy until such time that they might be adopted by ŌDC resolution. This Open Agenda may be subject to amendment by the addition or withdrawal of items contained therein or the taking of items in another order.

This Open Agenda was prepared by Manager Governance, Kaia King and approved for distribution by Group Manager Regulatory & Growth, Tony Quickfall on 29 November 2024.

Commencement of meeting

Te tīmatanga o te hui

The Chairperson will confirm the livestream to YouTube is active then declare the meeting open.

Opening prayer/reflection/words of wisdom

Karakia/huitao/whakataukī

The Chairperson will invite a member to provide opening words and/or prayer/karakia. Refer to the last page for a karakia in both English and Maori.

Apologies

Ngā hōnea

A Member who does not have leave of absence may tender an apology should they be absent from all or part of a meeting. The meeting may accept or decline any apologies. For clarification, the acceptance of a Member's apology constitutes a grant of 'leave of absence' for that specific meeting(s).

Staff recommendation

That Kāwhia Community Board receive and accept the apology from Deputy Chairperson Hinga Whiu for non-attendance.

Public forum

Hui tūmatanui

Public forums are designed to enable members of the public to bring matters, not necessarily on the meeting's agenda, to the attention of Council. Requests to attend the public forum must be made to on the form available on Council's website: otodc.govt.nz/about-council/meetings/speak-at-public-forum. Alternatively, please call 07 873 4000.

Speakers can speak for up to five (5) minutes. No more than two speakers can speak on behalf of an organisation during a public forum. At the conclusion of the presentation, elected members may ask questions of speakers. Questions are to be confined to obtaining information or clarification on matters raised by a speaker. Following the public forum, no debated or decisions will be made during the meeting on issues raised in the forum unless related to items already on the agenda.

Annie Mahara will speak on a request for funding from the Kāwhia Community Board's Discretionary Fund for \$240 being a fortnightly hireage of the Kāwhia Community Hall to open an Operation Kai 4 All foodbank. The service is run from Te Awamutu.

Late items

Ngā take tōmuri

Items not on the agenda for the meeting require a resolution under section 46A of the Local Government Official Information and Meetings Act 1987 stating the reasons why the item was not on the agenda and why it cannot be dealt with at a subsequent meeting on the basis of a full agenda item. It is important to note that late items can only be dealt with when special circumstances exist and not as a means of avoiding or frustrating the requirements in the Act relating to notice, agendas, agenda format and content.

Should a late item be raised, the following recommendation is made: *That Kāwhia Community Board accept the late item due to to be heard*

Declaration of conflict of interest

Te whakapuakanga pānga taharua

Members are reminded to stand aside from decision making when a conflict arises between their role as an elected member and any private or external interest they may have.

A conflict can exist where:

- The interest or relationship means you are biased; and/or
- Someone looking in from the outside could have reasonable grounds to think you might be biased.

Should any conflicts be declared, the following recommendation is made: *That Kāwhia Community Board receive the declaration of a conflict of interest from for item ... and direct the conflict to be recorded in Ōtorohanga District Council's Conflicts of Interest Register.*

Confirmation of minutes

Te whakaū i ngā meneti

The unconfirmed Minutes of the previous meeting is attached on the following page.

Staff recommendation

That Kāwhia Community Board confirm as a true and correct record of the meeting, the open Minutes of the meeting held on 7 November 2024 (document number 787676).

Kāwhia Community Board

Open Minutes of an ordinary meeting of the Kāwhia Community Board held in the Kāwhia Community Hall, 141 Jervois Street, Kāwhia on Thursday, 7 November 2024 commencing at 4.00pm.

Tanya Winter, Chief Executive

15 November 2024



OPEN TO THE PUBLIC

Kāwhia Community Board membership

Chairperson	Geoff Good	Apology
Deputy Chairperson	Hinga Whiu	Attended
Ōtorohanga District Councillor	Kit Jeffries	Attended
Board Member	Richard Harpur	Attended
Board Member	Dave Walsh	Attended

Senior staff in attendance

Chief Executive	Tanya Winter	Apology
Group Manager Business Enablement	Graham Bunn	Apology
Group Manager Engineering & Assets	Mark Lewis	Apology
Group Manager Regulatory & Growth	Tony Quickfall	Attended
Group Manager Strategy & Community	Nardia Gower	Apology
Chief Advisor	Ross McNeil	Apology

Opening formalities

Commencement of meeting	Te tīmatanga o te hui	4
Opening prayer/reflection/words of wisdom	Karakia/huitao/whakataukī	4
Apologies	Ngā hōnea	4
Public forum	Hui tūmatanui	4
Late items	Ngā take tōmuri	5
Declaration of conflict of interest	Te whakapuakanga pānga taharua	5
Confirmation of minutes	Te whakaū i ngā meneti	5
Notice of Motion	Councillor Kit Jeffries	16

Decision reports**Ngā pūrongo whakatau**

There were no reports.

Information only reports**Ngā pūrongo mōhiohio anake**

There were no reports.

Public excluded**Take matatapu**

There were no reports.

Other business**Ētahi atu take**

Board Member updates	17
Board projects	17
Community Board discretionary fund	17
Resolution Register	17

Closing formalities

Closing prayer/reflection/words of wisdom	Karakia/huritao/whakataukī	18
Meeting closure	Katinga o te hui	18

Workshops/briefings

Workshop 1: Waikato Catchment Management Plan (presented by Waikato Regional Council)	Open
Workshop 2: Waikato Coastal Plan (presented by Waikato Regional Council)	Open

This Open Minute was prepared by Manager Governance, Kaia King and approved for distribution by Group Manager Regulatory & Growth, Tony Quickfall on 15 November 2024.

Commencement of meeting**Te tīmatanga o te hui**

Deputy Chairperson Whiu declared the meeting open at 4.00pm.

Opening prayer/reflection/words of wisdom**Karakia/huitao/whakataukī**

Deputy Chairperson Whiu provided the opening karakia.

Apologies**Ngā hōnea**

Resolved K82: That Kāwhia Community Board receive and accept the apology from Chairperson Geoff Good for non-attendance.

Councillor Jeffries | Board Member Harpur

Public forum**Hui tūmatanui****Michael Edmonds**

Mr Edmonds outlined the background to how the Ware Hauora's services were introduced. He provided a PowerPoint presentation. Responding to a query from Board Member Harpur, Mr Edmonds advised the funding was set in 12 month contracts and was currently secured to 30 June 2025. The funding was provided by Waikato Tainui, the Ministry of Social Development and the Ministry of Health. He noted further options were being explored. Board Member Walsh queried the ongoing viability with a move to Kāwhia-run services and Mr Edmonds expressed his desire to assist the Kāwhia community to ensure a sustainable model, funded directly and led by Kāwhia whanau.

Councillor Jeffries raised concerns that patients attending the whare results in a loss of patient numbers and associated income to the Kāwhia Health Centre noting if that situation continued for some time (and assuming that Dr Burton will eventually want to retire) this may affect the financial viability of the Kāwhia Health Centre and the Community's ability to attract another doctor. In response, Mr Edmonds advised the health services were in partnership and collaboration with Dr John Burton.

Horahaere Scott

Ms Scott outlined an initiative of the Māori Women's Welfare League to plant pīngao (golden sand sedge) between Te Papa o Karewa and Tangi Te Korowhiti. Pīngao has been planted on the coast to assist with

erosion. It is also used for weaving and this planting site would be harvested for weaving. She sought Board support for the area to be planted out. This would be done in conjunction with Te Taio o Kāwhia Moana.

In response to a query from Board Member Harpur, Ms Scott advised the Horahaere nurse had an excellent number of plants. Board Member Walsh noted this would improve an area that often looked messy.

Councillor Jeffries queried the status of the land and ŌDC's Tony Quickfall advised staff would need to confirm and provide approval for the planting of the area.

The Board agreed in principle to the planting of pīngao between Te Papa o Karewa and Tangi Te Korowhiti subject to approval by ŌDC staff.

Late items

Ngā take tōmuri

There were no late items.

Declaration of conflict of interest

Te whakapuakanga pānga taharua

Board Member Walsh advised of a conflict of interest with the Notice of Motion lodged by Councillor Jeffries, and he declared he would stand aside for all discussion and any decision arising from that discussion.

Confirmation of minutes

Te whakaū i ngā meneti

Resolved K84: That Kāwhia Community Board confirm as a true and correct record of the meeting, the open Minutes of the meeting held on 3 October 2024 (document number 785422) subject to the amendment on page 12 where the question of Board Member Harpur was incorrectly noted as Board Member Walsh.

Board Member Harpur | Board Member Walsh

Councillor Jeffries advised the Kāwhia Kai Festival had been postponed until 2026 and did not require the grant given at the previous meeting. (Refer to Discretionary Fund item below).

Notice of Motion

Councillor Jeffries provided the background to the Motion. He noted the Kāwhia Sports Club were hampered by the lack of a formal lease to engage contractors etc. Councillor Jeffries apologised for the delays in resolving the lease.

Resolved K85: That the Kāwhia Community Board recommends the following to Ōtorohanga District Council:

- a. Approval from Council for the Kāwhia Sports Club (KSC) to rebuild on the previously occupied area of land on the Kāwhia Domain, as specified in the 25 September 2024 site plan, be granted;
- b. Granting of a new lease to the KSC be approved, in accordance with the relevant provisions of Council's Occupancy Policy;
- c. Council be requested to action granting the new lease at the earliest opportunity; and
- d. A draft Memorandum of Understanding (MoU), that clarifies the roles and responsibilities of the KSC and Council in relation to the rebuild, be prepared by Council and presented to the KSC for its consideration and adoption.

Councillor Jeffries | Deputy Chairperson Whiu

Board Member Walsh spoke to the lease providing background and why the absence of a current lease was holding the project up and the cost escalations while the lease was being addressed.

Decision reports

Ngā pūrongo whakatau

There were no reports.

Information only reports

Ngā pūrongo mōhiohio anake

There were no reports.

Public excluded

Take matatapu

There were no reports.

Board Member updates

Ngā kōrero hou a ngā Kaikaunihera

Board Member Harpur spoke on the construction of the pataka kai which has been built and is pending painting. He noted the proposed community garden site had been identified.

Deputy Chairperson Whiu noted the two new Kāwhia signs had been installed.

Councillor Jeffries commented on the boat incident on the Kāwhia Bar and Board Member Walsh provided commentary on the recent movement of the boat channel. Councillor Jeffries advised Ōtorohanga District Council had adopted the 23/24 Annual Report and noted changes to kerbside refuse collections would be promoted by Council in due course.

Board projects

Project 1: Kāwhia Storyboards

Deputy Chairperson Whiu advised the designs were being shortlisted and would be presented to the Board.

Community Board discretionary fund

Councillor Jeffries advised the Kāwhia Kai Festival was now postponed until February 2026 and therefore did not require the grant at this time. ŌDC's Manager Governance, Kaia King advised a formal resolution of the Board would be needed to rescind the Resolution.

Resolved K86: That the Kāwhia Community Board rescind Resolution K81 granting \$1,000 including GST for the Kāwhia Kai Festival due to its postponement until February 2026.

Board Member Walsh | Board Member Harpur

Resolution Register

Resolved K87: That the Kāwhia Community Board confirm the removal of resolutions K78 and K79 from the Register.

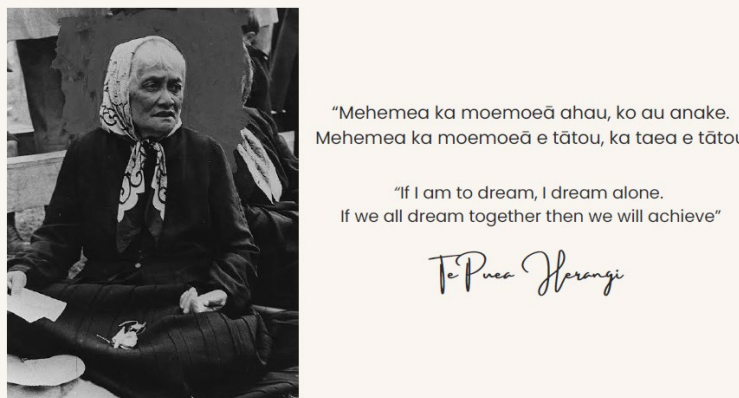
Board Member Harpur | Councillor Jeffries

Councillor Jeffries raised the ongoing matter of car/boat trailer parking at the Karewa boat ramp and queried if Board Members would support a resolution to ensure the matter was retained on the Resolution Register. ŌDC's Manager Governance, Kaia King advised this would need to be discussed outside the current meeting and if desired, a Board Member could lodge a Notice of Motion at least five working days prior to the next agenda distribution date. This would allow members of the public and the Board to consider the proposal prior to the meeting.

Closing prayer/reflection/words of wisdom

Karakia/huritao/whakataukī

Deputy Chairperson Whiu read the korero in the presentation from Michael Edmonds noting the importance of working together.



Deputy Chairperson Whiu led the Board to recite the karakia in Te Reo and then in English.

Meeting closure

Katinga o te hui

Deputy Chairperson Whiu declared the meeting closed at 4.55pm.

Workshops/briefings

Workshop 1 Waikato Catchment Management Plan

Paul Smith from Waikato Regional Council spoke to a PowerPoint presentation.

Workshop 2 Waikato Coastal Plan

Chris Straite from Waikato Regional Council spoke to a PowerPoint presentation.

Decision reports**Ngā pūrongo whakatau**

DISCLAIMER: The reports attached to this Open Agenda set out recommendations and suggested resolutions only. Those recommendations and suggested resolutions DO NOT represent Ōtorohanga District Council policy until such time as they might be adopted by formal resolution. This Open Agenda may be subject to amendment either by the addition or withdrawal of items contained therein.

Item 29 Update on consultation on the removal of pohutukawa trees, Kāwhia

To Kāwhia Community Board

From Paul Strange, Roding Manager.

Type **DECISION REPORT**

Date 5 December 2024



1. Purpose | Te Kaupapa

- 1.1. To provide an update on the feedback from the consultation period held between the 14 October and 4 November 2024 on the removal of the 10 Pōhutukawa trees on Pouewe St, Kāwhia and to seek approval to remove the trees.

2. Executive summary | Whakarāpopoto Matua

- 2.1. On the 3 October 2024 a report (document number 781672) was presented to the Kāwhia Community Board (KCB) recommending the removal of approximately 10 Pōhutukawa trees located on top of the seawall along Pouewe St, Kāwhia. It confirmed that the seedlings were sourced from Te Awamutu and not grown from local seedlings from Tangi-te-Korowhiti.
- 2.2. It was also recommended that a public consultation was carried out to canvass feedback from the Kāwhia Community as these trees are prominent to the entrance to the town. The reasons for the removal are detailed within the October report.
- 2.3. Community feedback received has shown considerable support for keeping the trees or looking for an alternative to retain the trees as outlined later in the report and Appendix 1.
- 2.4. Further to the report presented to the Board in October, ŌDC staff located an earlier report presented to the Board for the removal of the same trees in 2019 (document number 790735). The resolution at that time was to remove the trees however, given the timing of this report and the covid 19 pandemic it is suspected the removal was deferred and subsequently not revisited. This report is attached as Appendix 2 and 3.
- 2.5. Although there is support for the trees to remain or an alternative to removal explored, staff still recommend the trees are removed to preserve the sea wall and prevent further deterioration.

3. Staff recommendation | Tūtohutanga a ngā Kaimahi

That the Kāwhia Community Board:

- a) receives the feedback from the community from the consultation period and
- b) approves the removal of the 10 Pōhutukawa trees along the seawall to the left of Pouewe St on the main entrance to Kāwhia as identified in the October 2024 report (document number 781672).

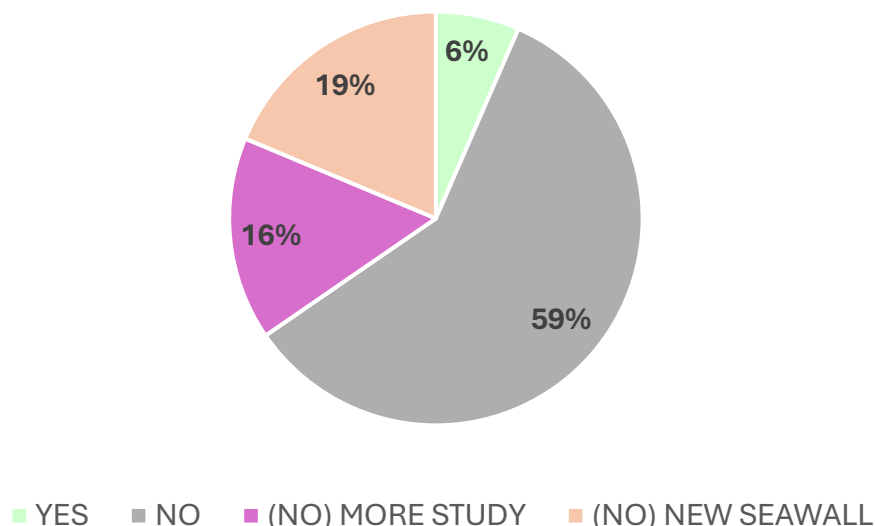
4. Discussion | He Kōrerorero

4.1. The public consultation ran from 14 October to 4 November 2024 with the ability for the submitters to provide their feedback through ŌDC’s Engage HQ platform. This platform assists ŌDC in collating the statistical information on the consultation process.

4.2. The chart below shows the percentages of the feedback. In total the platform was viewed by 764 people and 109 people responded to the consultation. Staff went through the feedback and summarised the findings as follows.

- 59% (64) said no to removing the trees,
- 19% (21) suggested a new seawall was constructed,
- 16% (17) suggested not to remove the trees and further work carried out for an alternative, and
- 6% (7) were in favour of the removal.

Removal of Pōhutukawa trees - Survey Results



4.3. It is fair to say based on this feedback there is considerable support to retain the trees or look for an alternative to the removal and this creates a difficult decision for the Board to consider as removal of the trees will be opposite to the public feedback.

- 4.4. The consultation results are only a representation of the people that actually took the time to submit, and some weight could be given to the other 600 odd people that did not feel the need to submit anything.
- 4.5. Although they did not submit, Waikato Regional Council provided staff with some considerations as part of the process. One of those considerations was to plant additional trees somewhere else in the community to offset the loss of biodiversity and amenity value of the removed trees.
- 4.6. This consideration would need more exploring, but one suggestion is the cemetery reserve as a possible location.

5. Options Analysis

To assist in the decision-making process the following options analysis has been carried out.

Option 1: Remove the trees

- 5.1. This is the simplest option and the least expensive. This will achieve the objective of protecting the sea wall and reduce any further deterioration. The removal will also provide the much-needed space for the construction of a new footpath to allow pedestrians to walk along the beachfront without having to access the road.
- 5.2. The difficulty with this option is that the trees have been in place for many years now and have a high level of belonging to the community as shown by the consultation results and the decision to do this is likely to cause a level of dissatisfaction within the community.

Option 2: Not to remove the trees

- 5.3. This is an option open to the Board, this will please most of the submitters, and the trees will continue to provide the aesthetic value and biodiversity to the entrance to town.
- 5.4. The downside to this option is the continued existence of the trees will allow them to grow bigger and they will continue to affect the sea wall, the roadway and eventually be so large that the removal will become more difficult. This will require ŌDC to consider other options for the seawall and roadway. Both these options will require considerable investment to investigate and construct. The other consideration is that the pedestrian access will get even more restricted into the future.

Option 3: Consider other options

- 5.5. Moving the sea wall has been one of the options presented through the consultation, this is an option but would require considerable investment as constructing any structure within the Coastal Marine Area (CMA) will require resource consent which is an expensive process with no guarantees of success. Once the consent is obtained the construction of sea walls is a significant investment and disruptive to the coastal marine environment.
- 5.6. Should this option be explored, a budget will need to be calculated and allowed for within the next annual plan or Long Term Plan.

- 5.7. Having recently worked through the renewal of the Aotea seawall consent, it would be a conservative estimate of between \$50 - \$100K, much of this cost being made up of design, engineering, and environmental investigations. This, however, would not include any construction costs.

Recommended option and rationale

- 5.8. Although not the most palatable to most of the submitters, the staff recommendation is Option 1, removal of the 10 Pōhutukawa trees.
- 5.9. This is the least expensive option and will provide the ability for the seawall to maintain its remaining integrity, any future maintenance will be in line with other existing seawall maintenance.

6. Considerations | Ngā Whai Whakaarotanga

Significance and engagement

- 6.1. Roding is a significant activity for ŌDC, and the management of the network to ensure a safe and efficient network is important.
- 6.2. Coastal structures are also significant assets and expensive to construct and maintain, any ability to slow the deterioration down is an important consideration for ŌDC.

Impacts on Māori

- 6.3. It was suggested that the trees had been grown from local seedlings from Tangi-te-Korowhiti, however it has been confirmed by the Community Board that the seedlings were sourced from Te Awamutu.
- 6.4. These trees are on road reserve and not recorded as having cultural significance.

Risk analysis

- 6.5. The risks considered through this recommendation are that the removal may cause some ill feeling within the community as the trees hold a level of emotional attachment and aesthetic value now that they have been there for some years. There is also the loss of biodiversity with the tree removal however, this can be mitigated in the medium term by additional planting.
- 6.6. The difficulty is how do you balance the value of the trees over the value of a road and a coastal structure, and the reality is that although there may be a high level of attachment and amenity value to the trees the cost to keep them or explore other options are simply not affordable to a small community. The recommendation from staff is largely based on costs and maintaining significant assets.

Policy and plans

- 6.7. Removal of these trees aligns with ŌDC policy and the District Plan. The Urban Tree Policy states that trees taller than five meters in height shall be considered by the relevant Community Board.
- 6.8. The trees have no other protection under other legislation.

Legal

- 6.9. No legal implications for ŌDC.

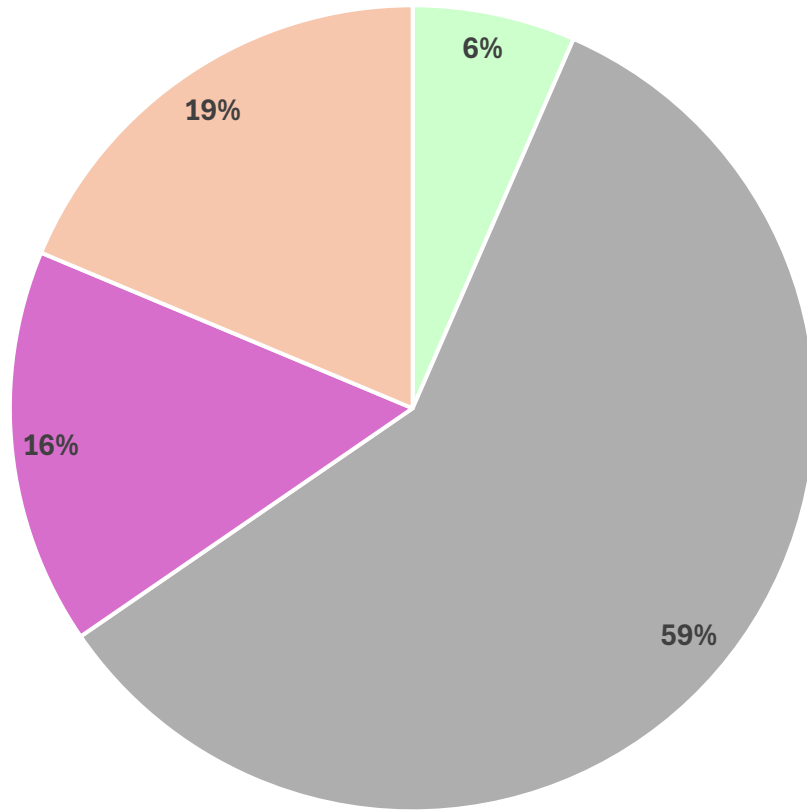
Financial

6.10. The tree removal, existing wall stability assessment and monitoring, and a gravel path can be accommodated withing existing budgets, any other options will require some cost analysis and approval through an annual or long term plan process.

7. Appendices | Ngā āpiti hanga

Number	Title	Document number
1	Kāwhia Pōhutukawa tree removal: Public feedback received 2024	N/A
2	Staff report – 20 September 2019	790735
3	Excerpt from Kāwhia Community Board minutes – 20 September 2029	N/A
4	Staff report – 3 October 2024	781672

Removal of Pōhutukawa trees - Results



■ YES ■ NO ■ (NO) MORE STUDY ■ (NO) NEW SEAWALL

6% SUPPORT

59% OPPOSED

16% (NO) - MORE STUDY

19% (NO) - NEW SEAWALL

Survey Responses for the Proposed removal of Pōhutukawa trees along the Kāwhia Seawall

Date	Time	Response Comments	YES	NO	(NO) MORE STUDY	(NO) NEW SEAWALL
14/10/2024	12.11pm	Leave them. They are the entrance to town and few people walk there. there.		<input checked="" type="checkbox"/>		
14/10/2024	12.37pm	I would like to think that they will not be removed until we have engaged with other councils that have removed trees along a coastline/road and that if we do remove them that it is in conjunction with the seawall being fixed, as I would hate to see them removed and then the road fall away as the tree roots could be helping with the erosion.			<input checked="" type="checkbox"/>	
14/10/2024	01.32pm	No comment, if they are causing damage to the seawall they should be removed, I do not know enough about propagation of trees, however if there is an opportunity to replant or propagate then that should be considered.			<input checked="" type="checkbox"/>	
14/10/2024	02.06pm	Do not remove these trees. I propose extending out the shoreline and reinforcing from there. There is no need to remove our Raakau. We as the Waipapa Marae and Runanganui o Ngati Hikairo have had no consultation prior to this notice.				<input checked="" type="checkbox"/>
14/10/2024	02.19pm	Yes. Community karakia before removal or prior to removal. Mandatory relocation of trees within Kawhia. Explanation as to why they need removing and if possible could they not be moved if there's no imminent threats?			<input checked="" type="checkbox"/>	
14/10/2024	02.35pm	I do not support the removal of these Pohutukawa due to the being natives		<input checked="" type="checkbox"/>		
14/10/2024	02.43pm	I was living in Kawhia when these trees were planted. They were seedlings grown at the nursery at the end of Tainui St. I have heard	<input checked="" type="checkbox"/>			

		rumours that the trees are grown from seeds from Tangitekorowhiti. I far as I know this is NOT correct. If these trees are likely to cause issues with road access into Kawhia township then I believe they need to go.				
14/10/2024	02.49pm	<p>Firstly, please do not publish my name if your are quoting survey comments.</p> <p>Q4 Do you have any comments or information about these ten trees that we should consider before removing them?</p> <p>I urge to to largely ignore responses that are emotive or are largely based on visual appearance of the trees. The decision to remove or not remove should be based on sound reason, practicality , cost & measurable outcomes. These people who only want them cause thy look nice will offer not practical or cost effective alternate to the problem & will be the first to complain if the road is damaged & they cant to to a medical appointment. They will also be the first to complain if the council chooses a more expensive option & their rates are affected</p>				
14/10/2024	02.57pm	I think you should talk to local iwi about preservation If such taonga being iconic to kawhia and tainui waka. Would be a shame to see such significant trees being removed. Also would advise a local meeting at the town hall to explain the justification of this kaupapa for all to have a clear underatanding.			<input checked="" type="checkbox"/>	
14/10/2024	03.21pm	Please do nit remove our rakau. I think they are beautiful when entering Kāwhia and add to the beauty of our town Ngā rakau are living and they were there first so I think thought needs to be considered on what kind of retainer can be done alongside them instead. Removing the rakau will not look very favorable coming into Kāwhia. They are also shade when I walk with my dog into Kāwhia from Te Wharu Bay when the sun is so hot in Summer. That is our resting place.				<input checked="" type="checkbox"/>
14/10/2024	03.32pm	Yes I do I am against the removal of these ten trees..why..i must bring to notice that there is sections of land adjacent to these				<input checked="" type="checkbox"/>

		tree's...wouldnt it be better to build up the seawall in these sections with asome appropriate walkway cut the roots if you must .and why were theses trees not put under protection in the 1st place...theses are still native trees if aotearoa				
14/10/2024	03.41pm	Removing the pohutukawa trees will be devastating and heartbreaking to the community, nature's beauty should remain. The roots of these trees will be holding the wall together and has no threat to the pedestrians, when they in flower they look absolutely amazing. I'm 45 years old and visit kawhia weekly they've been there all my life time and hopefully my daughters life time too. I was born here in kawhia and it's apart of the community, please leave them alone.		✓		
14/10/2024	03.49pm	Beautiful trees stopping erosion of rd way		✓		
14/10/2024	03.49pm	They belong there		✓		
14/10/2024	04.00pm	Yes - DONT People can walk around them How stupid can you be!! Protect these trees don't keep destroying them What are you going to put in their place - a stupid barrier for h & s - stupid Go do it somewhere else that needs it		✓		
14/10/2024	04.03pm	I have a suggestion. Why pull the trees out when you can build a bridge over the roots and also the bridge can be wide enough for also pedestrian. Thats my suggestion.				✓
14/10/2024	04.10pm	If considering moving don't cut them down. My personal opinion would be extracting them and plant them elsewhere in Kāwhia.				✓
14/10/2024	04.25pm	I can remove them for 60k mr max Baxter	✓			
14/10/2024	04.25pm	LEAVE THEM ALONE!!!! They are part of Kawhia history!		✓		
14/10/2024	04.34pm	I think their a beautiful sight of kawhia and they should remain. They're not a hazard!! And I think you should just leave them alone until their time is up		✓		
14/10/2024	04.55pm	Taking these tree away would detract from the beauty of our town. The trees create an amazing entrance to our town since the sports club was burnt down, I feel that losing these trees will hurt the wairua of the town which is already at a low		✓		

14/10/2024	05.01pm	I vote KEEP OUR PŌHUTUKAWA there are many other ways around yr projects for the future		<input checked="" type="checkbox"/>		
14/10/2024	05.04pm	Ko Tane Mahuta Te Tane Matua Nana ngā rākau e Ko ia te Atua o ngā rākau e Aue hei aue Ko Tane Mahuta Te Tane Matua Nana ngā manu e Lo is te Atua o ngā manu e Aue hei aue			<input checked="" type="checkbox"/>	
14/10/2024	05.13pm	If those trees are going to cause more damage to the sea wall, then remove them. The trees have no significance to the history of Kawhia. Not like Tangi Te Korowhiti and Te Papa o Karewa now thats History	<input checked="" type="checkbox"/>			
14/10/2024	05.14pm	Don't remove them, they are sacred trees! We can find another solution			<input checked="" type="checkbox"/>	
14/10/2024	05.14pm	Leave them alone they were here 1st...		<input checked="" type="checkbox"/>		
14/10/2024	05.17pm	Just leve them alone they been they for years		<input checked="" type="checkbox"/>		
14/10/2024	05.18pm	they are sentiments to kawhia. they also hold the bank for the road, put speed bumps up waiwera street. don't need a walk way it's safe enough nobody has died.... not to mention the trees are natives and significant to kawhia now , as a kaitiaki of kawhia, they are the welcoming blossoms for our visitors.....		<input checked="" type="checkbox"/>		
14/10/2024	05.18pm	Leave the trees alone please		<input checked="" type="checkbox"/>		
14/10/2024	05.31pm	THE POHUTUKAWAS SHOULD BE LEFT ALONE! The Pohutukawa trees should not be removed as they have been there for many years and many more years to come. The thing to do with the sea wall I think you should find another solution without removing the native tree. As for the people who walk to - and from town at the start of Kawhia (beach side S cape) area there's no reason to put in a side walk when there is plenty of room for them to walk without being on the road. THE POHUTUKAWAS SHOULD STAY WHERE THEY ARE!				<input checked="" type="checkbox"/>
14/10/2024	05.36pm	YES KEEP THE TREES THEY ARE A MAYOR PART OF KAWHIA		<input checked="" type="checkbox"/>		
14/10/2024	05.40pm	I have walked that stretch of road my whole life as we have lived down that end of town and have experienced first hand the beauty of the trees and the dangerous proximity to the road - especially with				<input checked="" type="checkbox"/>

		young children. The trees are iconic to the towns entrance and should remain as they are. I understand the need to maintain the Seawall and ensure there is resilience against erosion to the road, however removing the trees will also have an impact on the walls structural integrity. A new one will likely need to be built in its place or significant structural repairs. I would prefer to see a new Seawall and boardwalk installed to maintain the trees and for safer pedestrian access between along this stretch. I would be happy to help with feasibility assessments and/or Project Management of a project of this nature. My team has significant experience in Planning, Civil Design, Construction Management and Project Management of these types of Projects. Feel free to reach out. Āku mihi,				
14/10/2024	05.43pm	They are historical, they are what makes Kāwhia. Elsewhere they are protected. What's more they were there well before any of the Council Staff wishing to remove them. Removing them would be like cutting of your right arm. Work around them, give them the space.		✓		
14/10/2024	05.45pm	The bank on the opposite side is more of a hinderance. I feel that the removal of the trees are just an excuse to put a footpath/walkway in, and I am of the opinion that these are " Native Trees"? Putting a wall in would be the alternative!.		✓		
14/10/2024	05.50pm	NO to removing Pohutukawa tree's.		✓		
14/10/2024	06.17pm	For what reasons are the trees being removed??			✓	
14/10/2024	06.26pm	These trees are symbolic of arriving into the Kawhia township and are a natural landmark. Is there any way that these trees could be saved as they are iconic to our community.			✓	
14/10/2024	06.26pm	Waihotia atu! Do not remove!		✓		
14/10/2024	06.27pm	These trees provide shelter and wind protection they are not causing any erosion. Erosion control of the sea wall could be mitigated with boulders or concrete barriers. people have been walking these roads for years without harm, there are many other streets in kawhia without sidewalks etc. Which cause no issues. The local wandering		✓		

		horses are much more of a hazard. If roading surface is an issue it shouldnt be because the rest of the road surface from otorohanga to kawhia is appalling anyway so why bother cutting down these iconic trees for that. Thoughtless time and money wasting proposal. The money would be much better spent elsewhere.				
14/10/2024	06.32pm	DO NOT REMOVE THEM! THEY ARE HISTORY!		<input checked="" type="checkbox"/>		
14/10/2024	06.37pm	Mature trees should not be removed.		<input checked="" type="checkbox"/>		
14/10/2024	06.44pm	I strongly disagree with the removal of the 10 Poohutukawa raakau, so leave them alone please and thank you.		<input checked="" type="checkbox"/>		
14/10/2024	06.48pm	I dissagre		<input checked="" type="checkbox"/>		
14/10/2024	07.02pm	Don't remove them. These trees are Tapu....		<input checked="" type="checkbox"/>		
14/10/2024	07.03pm	Is it possible to relocate the trees, not destroy them - the place would not be the same without those trees but understand why they need to be moved.	<input checked="" type="checkbox"/>			
14/10/2024	07.04pm	Do not remove them. They are native trees and are important to our taiao, our environment. They essentially provide the same function as a seawall - they are natural buffers from the coast. And they are more important than the 'convenience' of pedestrians. Removal of such significant native trees at such a large scale is absolutely unacceptable.		<input checked="" type="checkbox"/>		
14/10/2024	07.07pm	If there is a way to save them that can be budgeted for in the next long term plan, please do. They are beautiful trees.			<input checked="" type="checkbox"/>	
14/10/2024	07.08pm	No, Just leave them there to flourish for another 100 years and build a retaining wall around them. They would have been there a lot longer than you or I or our grandparents and my kuia is 102 years young				<input checked="" type="checkbox"/>
14/10/2024	07.13pm	Why does the trees have to suffer when they been there for years ,		<input checked="" type="checkbox"/>		
14/10/2024	07.13pm	Do not remove the 10 Pohutukawa trees.		<input checked="" type="checkbox"/>		
14/10/2024	07.14pm	Do not remove the trees. Let nature take it course.		<input checked="" type="checkbox"/>		
14/10/2024	07.22pm	As an architect I am acutely aware of the importance of these trees as you enter Kawhia. Could you not concentrate on strengthening the				<input checked="" type="checkbox"/>

		sea wall. Once these trees are gone they can't be replaced.				
14/10/2024	07.40pm	They are nz native trees. Adjust infrastructure around them. What is wrong with walk way beside road. If it is an issue drop speed and add judder bars. If it was a privately Owned land or area council would make them look at other options first.				☑
14/10/2024	07.56pm	No. Do not remove them :)		☑		
14/10/2024	08.09pm	Yes I do! Leave our pōhutukawa trees alone.		☑		
14/10/2024	08.09pm	First of all it's my home town and I grown up here. I used to walk that road past the Pahutakawa trees and the town isn't busy enough to have a side walk down that road just to remove the Puhutakawa trees. Give me a better proposal, hmhhh maybe. Never		☑		
14/10/2024	08.14pm	I think that is a terrible idea - how sad for the community to remove that beautiful entrance to that little township - anyway aren't pohutukawa protected? Surely with an engineering experts will be able to solve this issue with out having to remove these beautiful trees - taking the cheap way out is not always the best !			☑	
14/10/2024	08.36pm	They are special and a big part of the history of Kawhia sacred trees that play a big role in the Māori stories of the land and waters of Kawhia		☑		
14/10/2024	08.50pm	Don't don't support cutting the pōhutukawa		☑		
14/10/2024	08.54pm	leave the trees alone cause it will cause the road to wash away etc if they are removed		☑		
14/10/2024	08.54pm	I don't think this qualifies as community consultation. Information is lacking, does not provide adequate justification for removal. Has the council consulted a senior arborist on this matter? There are methods of crown reduction and root pruning, these toanga deserve the dignity of the effort to explore options further. Kawhia lacks purposeful plantings in general in a time where thoughtful design is imperative. If the trees are removed, what species will take their place? This whole matter needs much greater consideration			☑	
14/10/2024	09.01pm	Council should be concentrating on removing the wattle trees &		☑		

		leaving the native trees alone. They beautify the entrance into Kawhia township they are Aotearoas Xmas tree & look absolutely beautiful when in bloom. Work around these beautiful trees. Leave them alone!!				
14/10/2024	10.13pm	Those nature of trees belong there as far as I can remember take those and it will never be the same.		✓		
15/10/2024	01.00am	These trees are an integral part of the local Iwi and hapuu and are taonga (cultural asset). Their cultural significance increases with time and are directly related to the hapuu's ancestral lineage.		✓		
15/10/2024	02.40am	Absolutely not. These trees are significant in their value to all from kawhia and outlying areas. Stop removing native trees. These trees are an amazing focal point coming in and out of kawhia.		✓		
15/10/2024	03.17am	Yip dont remove them		✓		
15/10/2024	04.49am	Unnecessary leave the trees alone build a walkway on the other side. Those are beautiful native trees that belong there.or if not move them elsewhere				✓
15/10/2024	06.42am	They have been a part of the Kawhia township for 30 years so in that have become apart of the fabric of the town and contribute significantly to the "image" of Kawhia, especially as you arrive into this beautiful township. It would be a great outcome if there was a way to retain the trees while protecting the Seawall.				✓
15/10/2024	07.17am	Leave them alone. If anything they are the reason why the bank is even around for this long if anything they will be making that bank even more stable as the roots will run deep. There fore holding it's structure of the bank. Together also they have a lot of Maori significant and whakapapa to the area		✓		
15/10/2024	07.26am	Kawhia has had large rate increase in the last couple of years, having to rebuild a sea wall instead of removing the trees does no make fiscal sense at an estimated (5 years ago) \$150 k for a seawall as opposed to \$10k to remove the trees. I think most ratepayers would support this initiative.	✓			

15/10/2024	09.28am	Why even consider taking away a piece of our history. The answer is absolutely not. Build another wall. Pedestrians can walk around but you can not ever replace the Taonga of these trees.				<input checked="" type="checkbox"/>
15/10/2024	09.30am	Is there proof they are causing threat. We plant along coastline to help slow down the erosion They are beautiful when in flower, welcome to Kawhia as the Tohu says. DEFINITE NO TO REMOVAL		<input checked="" type="checkbox"/>		
15/10/2024	10.18am	We do not want these trees to be removed as they make our community look better and although they may be causing some damage to the roads they will also be helping to hold up the road.		<input checked="" type="checkbox"/>		
15/10/2024	10.33am	Why cut them down?.. When they were planted we were under the impression they would assist the sea wall.. surely the project was investigated as to their growth and compatibility for the area that they are growing?? Surely a prune here and there would be enough for predestination access. I vote leave them alone they are our indigenous Christmas tree'		<input checked="" type="checkbox"/>		
15/10/2024	10.43am	Please let me know if there has been an Environmental Engineer who can safely save the beautiful Pohutakawa trees. And any other relevant information that will help us to adjust to having to remove historical significance to tangata whenua in Kāwhia.			<input checked="" type="checkbox"/>	
15/10/2024	11.35am	Leave the trees they are tapu.		<input checked="" type="checkbox"/>		
15/10/2024	11.36am	Yes, I do not agree with their removal. They are historical to the area.		<input checked="" type="checkbox"/>		
15/10/2024	12.30pm	Leave the trees. Pōhutukawa are protected. They look beautiful. Need to come up with an alternative solution.			<input checked="" type="checkbox"/>	
15/10/2024	12.46pm	I am strongly against removal of the Pohutukawa trees. Rather than potentially disturbing the sea wall and the road the roots are what stabilises. The State Highway into Kawhia with its expensive man made stabilisation over the past decade or so are an example of what happens when the vegetation is removed and eventually the roots that are left behind finally rot. Finally and very importantly removal of the trees would ruin a beautiful entrance into the village that is loved by residents and visitors alike. Other more aesthetically aware		<input checked="" type="checkbox"/>		

		councils and local bodies would envy our beautiful entrance into the town.				
15/10/2024	12.58pm	DO NOT REMOVE THEM!		✓		
15/10/2024	02.27pm	Do not remove them! They are an integral part of the environment and eco system. They are native trees and should be protected. Move the road not the trees		✓		
15/10/2024	02.49pm	Leave them.		✓		
15/10/2024	03.32pm	Should consider relocating them but it's at your expense yes removing them is the easy bit but think about putting them somewhere other people may take interest or someone private might like them on their land. Think about it before taking action. Keep Kawhia and Aotearoa clean green. Nga mihi nui I'm not a rate payer but I am tangata whenua, Ngati Hikairo, Waipapa Marae committee member.			✓	
15/10/2024	04.36pm	No to removal.		✓		
15/10/2024	04.37pm	They are a VERY IMPORTANT part of Kawhia history. Those taonga should be saved, and NOT removed/cut down.		✓		
15/10/2024	04.57pm	Known as one if the landmarks for kaawhia has historical connection, if the trees are removed I will never return there you can guarantee it.		✓		
15/10/2024	05.01pm	They do not need to be removed, they are taonga to Hau kainga, surrounding iwi and hapū of the kawhia region. As you are well aware, Tangi te Korowhiti is a pōhutukawa tree which holds big significance, please take this into consideration before thinking of removing ten of the same trees		✓		
15/10/2024	05.25pm	Yeah, waihotia! Leave them there and figure something else out. Surely you can see how much they mean to the people of kāwhia and think of another way to rectify the problem.		✓		
15/10/2024	05.45pm	I strongly oppose the removal of these Pohutukawa trees. These trees are Taonga and should be treated as such. Yes , the Pohutukawa trees hold cultural significance to Maori as they were seedlings taking from Tangi-te-korowhiti. This alone should have shut				✓

		<p>down the idea of removing these trees. However instead it highlights your disregard for Mana whenua. The Pohutukawa trees are also culturally significant to non Maori as well, as they are an iconic symbol of Kawhia. Removing even one tree would be killing the icon Kawhia image of the moana, black sand, Pohutukawa trees, fish'n'chips. Invest In strengthening the sea wall around the trees. Create a (5-10m)buffer zone between the sea and the trees. Allowing for pedestrians foot paths on the seaside of the trees. There can be Pohutukawa trees and a safe footpath for pedestrians if your perspective values both the trees and the people. You don't need to choose between one or the other. Both are important and both should be valued. Therefore I once again strongly oppose the removal of the 10 Pohutukawa trees.</p>				
15/10/2024	05.52pm	I object to the trees being removed. You need to partner with Ngaati Hikaito and Ngaati Mahuta ki taihauauru			☑	
15/10/2024	06.59pm	Do not remove them		☑		
15/10/2024	07.13pm	These trees make the first impression for any visitors arriving into our village. It would be a very sad day that they were removed. We have very few street trees & these affect no views. I'm of the opinion (as are some with roading expertise) that the roots of these trees help hold the bank. A rock wall needs to be added on the Harbourside of the trees to support a footpath. It is a long time since any maintenance was done on the sea wall in this area. We need to prioritise the longevity of these trees, remove the ivy from them & nurture these taonga. Please save our native trees!!				☑
15/10/2024	07.23pm	Having lived in Kawhia over 30 years I feel the proposal to remove these trees is very short sighted. Trees are planted to combat erosion, not cause it,ie river banks etc. No major maintenance has been done on that sea wall in the time I can remember. Building another retaining wall would solve the problem & give an option for a walkway if ever needed. These trees are very valuable				☑

		aesthetically to Kawhia. I hope a public meeting will be held as this affects the people of Kawhia.				
16/10/2024	03.53am	Dont		✓		
16/10/2024	04.07am	Please can we find a way to make the trees part of the Seawall solution rather than removing them. Get creative please rather than using colonialist methodology				✓
16/10/2024	04.44am	Remove trees.build boardwalk over water wide enough for bikes and people	✓			
16/10/2024	11.02am	I would prefer that the trees stay, and that would be he council find ways to stabilise the sea wall without removing our trees				✓
16/10/2024	05.00pm	inconvenience to pedestrians is no justification for the removal of trees. Coromandel has similar trees growing on the Thames coast road and they seem to be accepting of the downside of keeping the trees where they are. Our trees are beautiful and of historical significance and you should be ashamed of yourselves for even considering this plan of action.		✓		
17/10/2024	05.05am	Only that as part of Project Crimson many years ago where thousand's of Pohutukawa were raised grown and planted around the harbour , these trees coming to Kāwhia are more than just iconic. They do carry their own legacy. Find.....use the other options rather than destroying these trees		✓		
17/10/2024	12.28pm	I agree these trees need removing and the sooner the better. The bigger they get the more it will cost to remove them.	✓			
17/10/2024	12.38pm	Please see my attached submission in support of retaining these trees.		✓		
17/10/2024	04.31pm	Leave them alone. They are native taonga and are of great importance to us and Maori and mana whenua of this area		✓		
18/10/2024	04.57am	I think it would be a real shame to cut done such beautiful native trees. Most people are happier to walk over natural Terran an a foot path. The roots will naturally hold the bank in better than concrete.		✓		
18/10/2024	11.25am	When was the last time the wall was messured for movement? I have just walked down then and the only signs of movment of the wall is			✓	

		inbetween the trees. Why is this when you say the trees are pushing the wall out? The only erosion to the wall is at the eastern end where a large caven has been washed out under one of the trees .This has been spoken about before and the result was for the council to mark the road with two white crosses(the white crosses did not stop the see from doing damage.King Carnut tride this as wel				
22/10/2024	01.49pm	...what a load of bullshit asking for submissions when you you are going to go ahead and remove them anyway!????? Disgraceful!!!				
22/10/2024	11.36am	You should NOT remove the trees. If the wall needs fixing, fix the wall. The council will need to do so eventually in any case. The trees add to the stability of the bank and provide shade for those walking along the harbour front. The trees are taonga in the making. Money is just money.				☑
24/10/2024	07.43pm	These trees are a asset in summer when most visitors arrive. So many coastal towns have pohutukawas between the road and the sea. It would such a shame to lose them just to save council dollars.		☑		
28/10/2024	11.17am	I do not support the removal of these trees for the following reasons, 1. The trees are right on the edge of the bank and it is hard to see how they have affected the pedestrian access along here. 2. The aesthetic value of these trees (flowers, shade, native bird habitat, shelter from weather) and the “welcoming corridor” as you enter Kawhia is high. They provide a beautiful entranceway to the township. 3. I do not believe the trees are the only cause of the degradation of the sea wall, sea walls require ongoing maintenance and when was any maintenance last performed to this wall? Why not build a rock bund or wall on the seaward side to protect the existing wall? 4. Lower the speed limit to 30km/h on this short stretch of road to improve pedestrian safety.				☑
1/11/2024	02.02pm	The most glaring pitfall of the proposed actions was the idea that it only concerned the trees. There was no place for consideration of future developments or issues. They think the only issue is trees and			☑	

	<p>now. (see DECISION REPORT 5.7 Public submissions may not consider future costs and liabilities) He seemed surprised when I said I saw three components collectively involved, the road, the trees and the wall. KCB seem to consider the tree issue without any consideration of the wall extensions and repairs required. Not a word was spoken of the need to excavate the foundations of the road to replace and repair the hole at the eastern end in such a way as to prevent further and future erosion by the sea. Extension of the wall or similar measures will be necessary to make a lasting repair of the current damage. Two photos in the poster clearly show this issue. No consideration is given to the risk of soil disturbance due to rotting tree stumps. Notions of extending the walkway toward the seawall have not taken into account the OSH requirements to prevent falls over the near 2 metre edge. Removal of stumps will, by soil disturbance create greater pressure on the wall. The poster shows damage to the wall yet no mention of repairs or the cost. (in engineer’s report?) I believe these issues are facts that cannot be isolated from the tree removal proposal. So far I have not seen an engineer’s report on the wall condition and ability to continue its intended function. Rising sea level effects should be included. I have a copy of the Decision Report, the poster for display in Kawhia, and the original Walkway 2019 proposal.</p>				
		7	63	17	20

ITEM 126 **REMOVAL OF POHUTUKAWA TREES POUWE STREET, KAWHIA**

TO: **CHAIRPERSON & MEMBERS KAWHIA COMMUNITY BOARD**

FROM: **GROUP MANAGER ENGINEERING**

DATE: **20 SEPTEMBER 2019**

Relevant Community Outcomes

- The Ōtorohanga District is a safe place to live
 - Ensure services and facilities meet the needs of the Community
 - Manage the natural and physical environment in a sustainable manner
 - Foster an involved and engaged Community
 - Protect the special character of our harbours and their catchments
-

EXECUTIVE SUMMARY

The purpose of this report is to make a decision on the future of the pohutukawa trees which have been planted along Pouewe Street at the entrance to Kawhia.

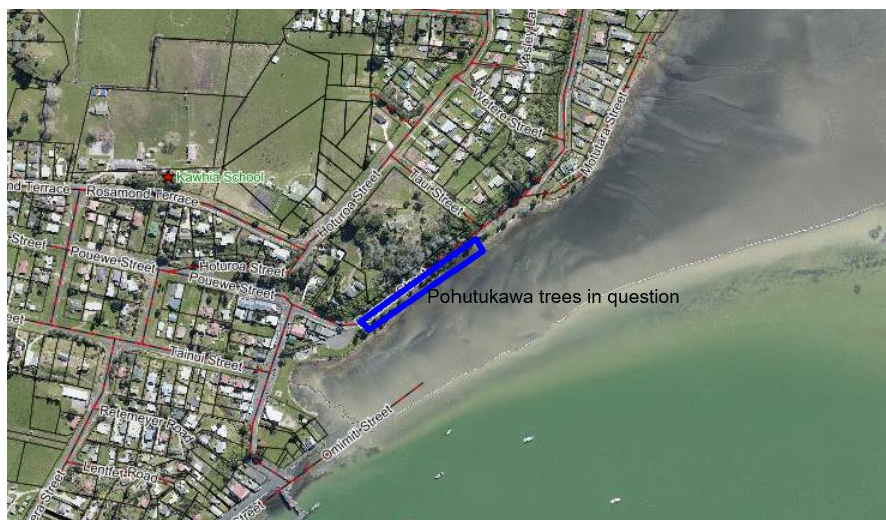
STAFF RECOMMENDATION

It is recommended that the Board recommends to Council:

1. That the ten pohutukawa trees on Pouewe Street Kawhia, numbered 1 to 10 in the body of the report, be removed in order to prevent damage to the adjacent seawall and road.
2. That up to \$11,000 be approved for this work and that this be funded from the road maintenance budget.

BACKGROUND AND CURRENT SITUATION

The pohutukawa trees in question were planted relatively recently by a community organisation, possibly a walking group. For the purpose of this report, who and exactly when they were planted is largely unimportant; what is of relevance is that these trees were quite recently planted. Based on research by staff, they do not appear to hold any cultural or historical significance and it is believed these trees were planted in order to add visual appeal to the entrance to the Kawhia Township. (Large scale location shown in the image below).



Recently the question has been raised about the effect these trees may have on the adjacent retaining wall and the (only) road into Kawhia. This report looks primarily at the 10 pohutukawa trees which are closest to Pouewe Street as shown in the image below.



The extent of other pohutukawa trees in the area is shown below, and areas A and B, which are a little further away from the road, are not considered in this report.



The key consideration is that the trees will continue to grow and what effect this will have on the adjacent road and seawall. An indication of the likely crown circumference of the 10 trees is shown below, and it is evident that they would extend right across to the other side of Pouewe Street and that the trees would considerably overlap each other.



Currently there is no visible damage to the road, however the seawall is being adversely affected in some places. This can be seen in the following photographs which were taken in August 2019 where the seawall is now leaning over.





Other considerations

Council does not have services in this area, however there are street lights on the opposite side of the road which would be adversely affected if the tree grow too big.

Consideration was also given to the possibility of pruning the trees and keeping them at a manageable size. Unfortunately the pruning of pohutukawa trees to accomplish this is both difficult and has no guarantee of success due to the nature of the way the trees grow. The trees are however slow growing and have a long lifespan so it is possible it would take many years for the trees to grow sufficiently to damage the road. (The retaining wall is currently being damaged)

Significance and Engagement

It does not appear that any consultation took place with council or local iwi prior to the planting of the trees.

One of the options in this report is that the Board consults with the community before making a decision on the future of the trees.

Policy and Plan Considerations

Section 4.4 Removing Trees in Council's urban tree policy states:

There are times when trees need to be felled. They can be damaged in strong winds, by fire, by vandalism or disease, and be left in a hazardous state. If damaged trees are posing an obvious hazard to people or

property they shall be felled as soon as possible. If there is some doubt about the safety of a damaged mature tree over 5 metres high a qualified arborist shall be consulted.

Some trees can outgrow their space and damage or pose a risk to services, roading, private or public property, or cause other nuisance. In such cases the proposed removal of one or more trees of 5 metres or more in height in an urban area shall be considered by the relevant Community Board, who shall determine whether public consultation is required before a final decision is made.

Similar consideration shall also be applied to any tree planted for memorial purposes, a record of which is contained in a register kept by Council.

Younger, immature trees may be removed without consultation. This typically occurs when trees are vandalised or it becomes apparent that the tree is not suited to that location.

The current height of these trees on the left hand side of the road, using the vehicle in the image below for scale, appears to be in excess of the 5m height defined above.



With reference to the above clause 4.4, there is no doubt that the trees will outgrow their space and damage the road and seawall. There is a possibility that mature pohutukawa trees could stabilise the coast line instead of the retaining wall however, this would be less effective and the trees would continue to damage the road and cause a nuisance to road users.

Financial Considerations

The future financial considerations would be significant in that should the seawall fail, this could lead to the road eroding and ultimately washing away. This of course would not be allowed to happen and would necessitate the removal of the (now larger) trees and rebuilding of the retaining wall. An additional complication of this process would be the need to work in the foreshore zone and associated marine impact assessments and resource consents would be required.

The scope of work required for the replacement of the retaining wall and rebuilding of the road would also need some design work, which makes an accurate estimate difficult but a coarse estimate would put the likely cost well in excess of \$100,000. There is no budget forecast for this work and should there be a failure of the retaining wall, which would be most likely in extreme weather, there would be an immediate need to incur considerable cost in order to keep the only road into Kawhia open.

The cost to remove the 10 trees in question is estimated at \$11,000. The budget for this work could be allocated from the road maintenance budget as the removal of the trees would be for the benefit of the road and associated retaining structure.

Arborist to fell the trees	2,400
Mulch small branches to truck and dispose to green waste	800
Cut large branches and trunks into rings and place for pick up	800
Stump grinding	3,000
Traffic management stop go operation for three days	3,300
Shoulder closure for three days	700
	<hr/>
	11,000
	<hr/>

Options Analysis

1: The Kawhia Community Board approves the removal of the pohutukawa trees without the need for public consultation

The advantages of this option are:

- There is no longer a risk of damage to the road and collapse of the retaining wall
- There is no longer a risk of a large capital cost to Council to rebuild the retaining wall and repair the road
- The risk of the only road into Kawhia being washed away in a significant weather event is reduced
- That the future maintenance of the road and adjacent retaining wall is simplified and the cost minimised
- The view across the harbour for people driving into Kawhia becomes open and expansive, which to some is most attractive

The disadvantages of this option are:

- This trees, which add colour and perhaps character to the entrance to Kawhia are lost
- The view for those driving into Kawhia does not include the trees which to some is most attractive
- Council may overspend the allocated road maintenance budget

2: The Kawhia Community Board decides there is a need to consult with the public and delays a decision of the future of these trees until consultation is complete.

The advantages of this option are:

- The community have the chance to express their views and provide feedback to the Board.
- The Board can be assured that the wishes of the community have been gathered

The disadvantages of this option are:

- No decision is made which prolongs the process and slightly increases the risk of the retaining wall collapsing before a decision can be made
- Feedback from the community during the consultation process may be diverse and provide no clear preference.

3: The Kawhia Community Board decides to leave the trees for the time being and monitor the condition of the retaining wall and road.

The advantages of this option are:

- No costs are incurred
- A more developed design and costing could be completed in the event that the retaining wall fails

The disadvantages of this option are:

- The risk of the retaining wall failing becomes greater as time goes by
- The cost of removing the trees increases the bigger they become
- Should the need to address the situation becomes evident, there is a possibility that consultation with the community would still be required which could be time consuming
- Should there be a failure of the retaining wall then repairs would be made under urgency, which would be more expensive and also preclude any consultation taking place as the road would have to be opened as soon as possible

Preferred Option

The preferred option is Option 1, which will reduce the risk of the only road into Kawhia being damaged or washed away, and significant costs can be delayed due to optimising the functional life of the road and retaining wall.

R H Brady

GROUP MANAGER ENGINEERING

The Chief Executive referred members to her report of the key focus areas for her during the period 20 August – 16 September 2019.

She said she was happy to take any questions on the report.

In reply to the Chair regarding Iwi relationships Mr. Derek Wooster, member of the public, was given permission to speak by the Chair. Mr. Wooster advised that the proposed working group will be tasked with establishing a process on how Iwi – Council relationships can be improved.

Resolved that the Chief Executive's report for the period 20 August – 16 September 2019 be received.

Chair / Councillor Pilkington

ITEM 126 REMOVAL OF POHUTUKAWA TREES POUWE STREET, KAWHIA

The Group Manager – Engineering referred members to his report the purpose of which is to make a decision on the future of the Pohutukawa trees which have been planted along Pouewe Street at the entrance to Kawhia.

He advised that the wrong type of trees have been planted in this location and in his position as a Group Manager it is necessary for him to ensure that Council's assets are protected. He asked members whether they had any questions on the report.

During discussion the following points were highlighted by Board members.

- Trees are currently forcing the seawall to collapse and their root system is traveling under the roadway.
- It seems like a straight forward decision, practically the trees need to be removed.
- Some work needs to be carried out however, consultation with the Community should be undertaken.
- The question was asked whether the seeds / cuttings of the current trees came from the Historic Pohutukawa Tree.
- The current trees were planted without any public consultation.
- Substantial costs would be incurred should the seawall require replacing.
- A Communication Plan to be provided for presentation back to the Board, including reasons as to why the Board is proposing to remove the trees.

Resolved that

1. The Board Recommends to Council that the Kawhia Community Board approves the removal of the Pohutukawa trees without the need for public consultation.
2. That up to \$11,000 be approved for this work and that this be funded from the road maintenance budget.

Mr. Walsh / Chair

ITEM 127 ROUTINE ENGINEERING REPORT - MAY TO JULY 2019

The Group Manager Engineering referred members to the routine report on Engineering matters for the period May to July 2019.

The following items were highlighted.

- Council is almost halfway through the NZTA three yearly cycle.
- Should a major slip occur on State Highway 31 Kawhia would be isolated.
- Kawhia Youth are able to access the Youth Driver Training Program.
- Report to be prepared regarding the Kawhia Wharf, condition of piles, cleaning up under the Wharf.
- Routine testing to be carried out on the old landfill site.

Resolved that the Routine Engineering report for May – July 2019 be received.

Chair / Mr. Fletcher

Item 26 Street tree removal in Kāwhia

To Kāwhia Community Board

From Paul Strange, Manager Roothing.

Type **DECISION REPORT**

Date 3 October 2024



1. Purpose | Te Kaupapa

- 1.1. To seek approval to consult on the removal of approximately 10 pohutukawa street trees on Pouewe Street, Kāwhia.

2. Executive summary | Whakarāpopoto Matua

- 2.1. Around 10 pohutukawa trees are planted on top of the seawall along Pouewe Street, Kāwhia.
- 2.2. The root systems of the trees are causing the seawall to fail and will cause further issues as they get bigger.
- 2.3. The trees growing bigger had forced a temporary footpath to be painted on the roadside for pedestrians as all available space was being used by the trees. This temporary path is substandard and provides no security to pedestrians.
- 2.4. The trees are not identified as notable trees within the District Plan but do trigger the requirement under the Urban Tree Policy that trees taller than five metres in height shall be considered by the relevant Community Board who shall determine whether public consultation is required before a final decision is made.
- 2.5. The trees have no other protection under other legislation.
- 2.6. The Kāwhia Community Board discussed these trees at their footpath workshop on 6 June 2024 and requested a report be presented for the Board’s consideration.
- 2.7. This report enables the Kāwhia Community Board to make a formal decision about the tree removal.

3. Staff recommendation | Tūtohutanga a ngā Kaimahi

That the Kāwhia Community Board approves a three-week consultation on the removal of the 10 pohutukawa trees planted on the top of the seawall along Pouewe Street, Kāwhia and staff provide a further report with the submissions for a final decision on the removal of the trees once submissions are considered.

4. Discussion | He Kōrerorero

- 4.1. The trees were planted as small trees sourced from a Te Awamutu Garden Centre to beautify the entrance to Kāwhia around 20 years ago.
- 4.2. The 10 trees are relatively small pohutukawa trees. Other problem vegetation along the seawall includes wattle and ivy.
- 4.3. The trees are growing well but are causing issues with the seawall. They also occupy valuable space on the roadside that has meant a temporary painted footpath has had to be installed.
- 4.4. The footpath and the bollards along it are a concern for larger vehicles, and footpath users have little protection. Recent increased logging at Kāwhia will make the pedestrians feel even more exposed.
- 4.5. By removing around 10 trees, the seawall condition will stabilise, and any repairs will be more effective.
- 4.6. Removal of the trees will also enable Council to construct a new gravel footpath closer to the wall and the yellow zone to be a buffer between pedestrians and traffic. The gravel path can be concreted once the seawall stability is confirmed.
- 4.7. If the trees remain the seawall stability will be further compromised, and the trees are larger to deal with.
- 4.8. The trees can be identified with a ribbon, prior to removal, with a Community Board representative ensuring the correct trees are removed.
- 4.9. Any wood from the removal can be made available to locals for firewood or crafts.
- 4.10. Involving public consultation would require information about the seawall and footpath safety to be made available so the public understood all the issues. There should be some discussion around future potential costs, however these would be speculative.



5. Considerations | Ngā Whai Whakaarotanga

Significance and engagement

- 5.1. Roothing is a significant activity for Council, and the management of the network, to ensure a safe and efficient network is important.
- 5.2. The issue was raised with the Community Board at the footpath workshop on 6 June 2024, and this report is formal endorsement of the tree removal. This section of footpath was identified as the highest priority needing attention.
- 5.3. If the board decides to consult on the removal, a three-week consultation will be initiated. Consultation will be via Ōtorohanga District Council's online consultation portal and advertised on Council's media platforms. A subsequent report will be presented with the submissions for further consideration.

Impacts on Māori

- 5.4. It was suggested that the trees had been grown from local seedlings from Tangi-te-Korowhiti. However, it has been confirmed by the Community Board that the seedlings were sourced from Te Awamutu.
- 5.5. These trees are on road reserve and not recorded as having cultural significance.

Risk analysis

- 5.6. Some community voices may not be pleased about the removal of any trees, and pohutukawa in a coastal environment are sensitive.
- 5.7. Public submissions may not consider future costs and liabilities.
- 5.8. We have the opportunity to remove these trees prior to them becoming more significant, and a bigger problem.
- 5.9. Damage to the seawall will incur costs and major repairs to the seawall and future issues with the road could have a big impact on local traffic and access.

Policy and plans

- 5.10. Removal of these trees aligns with Council policy and the District Plan. The Urban Tree Policy states that trees taller than five metres in height shall be considered by the relevant Community Board.
- 5.11. The trees have no other protection under other legislation.
- 5.12. It is not considered appropriate to have public consultation on works considered essential. However, given the trees have been there for a considerable time, it is recommended that the community are afforded an opportunity to have their say.

Legal

- 5.13. No legal implications for Council.

Financial

- 5.14. The tree removal, wall stability assessment and monitoring, and a gravel path can be accommodated with existing budgets.

- 5.15. Coastal structures are expensive to maintain and if the trees continue to damage the existing structures this will increase the cost of any future maintenance and make repairs more difficult.

Options Analysis

Option 1: Remove trees

- 5.16. Removal of the 10 Pohutukawa trees would improve stabilisation of the seawall and allow a safer footpath to be installed.

Pros – minimises risk of further seawall damage and future costs, and limits risks associated with the current footpath. Any seawall repairs are considered maintenance.

Cons – trees are removed without public consultation.

Option 2: Consult on tree removal

- 5.17. Carry out a three-week public consultation and upon completion of consultation, a further report to be brought back to the Community Board for consideration of the submissions and a final decision on the trees.

Pros – Public have a chance to voice their opinions.

Cons – difficulty getting public to understand the future financial and reputational risks. The Community Board's options are limited to option 1,2 or 3 and the public submissions get outweighed by the need for essential works to proceed.

Option 3: Defer removal

- 5.18. Delay removal of the Pohutukawa trees, continue use of the yellow painted path, monitor the seawall, and manage the trees until their removal is a bigger job.

Pros – the trees remain until they become a problem that cannot be ignored.

Cons – increasing exposure to risk of further seawall damage and future costs, and risk associated with the current path. The trees become a bigger and a more expensive problem to manage.

Option 4: Do not remove trees, and accept seawall and access risks

- 5.19. Do not remove the trees and accept the seawall and footpath will become unserviceable, potentially affecting access to the community.

Pros – The trees remain.

Cons – the trees become more important than safe community access and the seawall eventually fails or requires rebuilding in the tidal zone to protect the road (a very expensive option).

Recommended option and rationale

- 5.20. Option 2: Carry out a three-week public consultation and upon completion of consultation, a further report to be brought back to the board for consideration of the submissions and a final decision on the trees.

6. Appendices | Ngā apitihanga

Number	Title	Document number
1	Ōtorohanga District Council Urban Tree Policy	

URBAN TREE POLICY



Adopted by the Otorohanga District Council at a meeting held on
24 June 2008

TABLE OF CONTENTS

1.	Background.....	1
2.	Purposes for Planting Trees in Urban Areas	2
3.	Trees on Road Reserves in Urban Areas.....	3
3.1	Site Selection.....	3
3.1.1	Services and Utilities.....	3
3.1.2	Road and Property Access Splay.....	3
3.2	Tree Selection.....	5
3.2.1	Maximum Expected Height	5
3.2.2	Site Tolerance	5
3.2.3	Low Maintenance Planting	5
3.2.4	Establishment.....	5
3.2.5	Access for Mowing	5
3.3	Trees on Private Property Causing a Public Nuisance	6
4.	Trees General.....	7
4.1	Community Landscape Plans	7
4.2	Public Consultation and Notification	7
4.3	Tree Maintenance	7
4.4	Removing Trees	7
4.5	New Urban Subdivisions.....	8
4.6	Protected Trees	8
4.7	Tree Evaluation.....	8
4.8	Private Commemorative Planting on Public Land.....	9
	References	9

1. BACKGROUND

This policy revises and replaces the "Guidelines for Tree Planting" produced in October 1997, which covered tree planting on Council road reserves within the Otorohanga Community. This revised policy includes a section on tree planting in other land managed by Otorohanga District Council including recreation reserves (active and passive) cemeteries and pensioner housing. It is intended that this policy will be applicable to all trees on Council owned land in the communities of Otorohanga and Kawhia.

Trees are one of the best single methods of improving and enhancing the urban area however careful consideration needs to be given to selecting the best sites for trees in relation to underground services, road integrity, traffic visibility, safety and security of pedestrians and cyclists. Trees need to be located so they do not cause the icing of any road pavement between the hours of 10.30am and 2.30pm, in accordance with the requirements of the District Plan.

Careful consideration also needs to be given to the best tree species for the site. This relates to tree size, leaf fall, vigour, climatic tolerances or toxicity. All trees need ongoing maintenance and management and this needs to be considered when tree planting is planned.

Trees sometimes need to be removed if they become unsafe, diseased or outgrow the site. They can also pose a risk to adjacent structures such as buildings, roads, footpaths and other services.

Some direction is needed in allowing public involvement in tree planning and placement especially in new subdivisions, other new plantings and tree removal.

Some trees on both private and public land have special significance because of inherent qualities of the tree or their cultural and historic value. These trees need special acknowledgement and protection within this policy and within the District Plan. A standard set of criteria to evaluate trees is referenced in this policy.

Trees in larger plant communities also need consideration. Our forest and scenic reserves at Rotary Park, Phillips Reserve, Davis Reserve and Bob Horsfall Reserve all have significant tree species such as Kauri and Redwoods.

This tree policy connects to other Council strategies and guidelines including the District Plan, the two Community Landscape Plans and the adopted Hamilton City Development Manual.

2. PURPOSES FOR PLANTING TREES IN URBAN AREAS

Trees planted in urban areas can serve a number of purposes however careful planning is needed to achieve the desired outcomes and effects.

Trees help to define land use and land character, they can be used to break up what is often an endless vista of houses, increase privacy, provide shade and shelter and reduce or soften noise level. They can assist drivers to identify bends and other road definitions and help to reduce glare and reflections.

Planned tree planting can be functional defining space and scale, screening unsightly areas, and used to make a physical barrier or to stop erosion on steep slopes.

Trees are also capable of absorbing air pollutants and carbon dioxide, and release oxygen.

Tree planting can be for aesthetic reasons. They can frame views, enhance land forms and give unity to landscapes. They reduce the hard impacts of roads and buildings with soft colours and textures. Trees give the town a sense of continuity by linking the present with the past and dramatically display the seasons. They bring nature back into the town. In early October each year when the Kowhai in Otorohanga are flowering, large numbers of Tui can be seen in a single tree. Kowhai and other trees that attract birds can enhance the lives of our residents and bring joy to visitors.

The trees in Otorohanga add much to the identity and character of the town. The larger trees in Memorial Park, Island Reserve, Windsor Park and the Otorohanga Domain all reflect the age and maturity of the town while smaller trees along the roads and streets soften the urban lines and add colour and natural life to the townscape. Despite this Otorohanga is lacking enough large trees to have a great visual impact on the visitor driving through the town.

Our forested areas allow passive recreation such as bush walks and jogging, and opportunities for nature study, enjoyment and education. The special trees such as Kauri and Redwoods are also of special interest. Tree communities in Phillips Reserve, Bob Horsfall Reserve, Rotary Park and around the hills flanking Kawhia are important land stabilisers that mitigate environmental hazards by reducing erosion and flooding.

3. TREES ON ROAD RESERVE IN URBAN AREAS

3.1 Site Selection

3.1.1 Services and Utilities

Generally wherever plantings are being proposed some type of service or utility will be encountered and must be taken into consideration before trees are planted. Tree roots are the most common cause of failed services or utilities. In many cases the intrusion of tree roots into sewer and / or stormwater pipes or growing under roads and footpaths can cause expensive repair costs to Council and private owners. The selection of the tree species must be considered carefully to ensure roots do not infringe. Certain tree species such as Poplar and Willows with extensive systems of shallow roots are inherently unsuitable for planting next to utility services.

Acceptable minimum distances from services or utilities to which planting is permitted, are included in Table A below.

TABLE A - MINIMUM TREE PLANTING DISTANCES FROM SERVICES AND UTILITIES, AND MAXIMUM EXPECTED HEIGHT OF TREES

Type of Service or Utility	Trees and shrubs up to 2 metres	Trees 2-5 metres	Trees over 5 metres
Water Main	300mm	1 metre	3 metres
Sanitary Sewer	300mm	1 metre	3 metres
Stormwater Main	300mm	1 metre	3 metres
Telecom	300mm	1 metre	2 metres
Underground Power	300mm	1 metre	3 metres
Gas Main	300mm	1 metre	3 metres
Kerb & Channel	600mm	1 metre	2 metres
Footpath	500mm	1 metre	2 metres
Standard Streetlight	4 metres	4 metres	6 metres
Overhead Power	Discretion required	Discretion required	Not permitted

In some circumstances tree root directors may allow trees to be planted closer to underground services. Their use and location must be approved by the Engineering Manager prior to planting.

3.1.2 Road and Property Access Splay

Trees have often been planted in places which restrict the visibility of road users at intersections or private accesses. Traffic or pedestrian safety is an important reason to control where trees are planted in relation to road boundaries. Splay areas which must remain free from tree plantings are included in Diagram A.

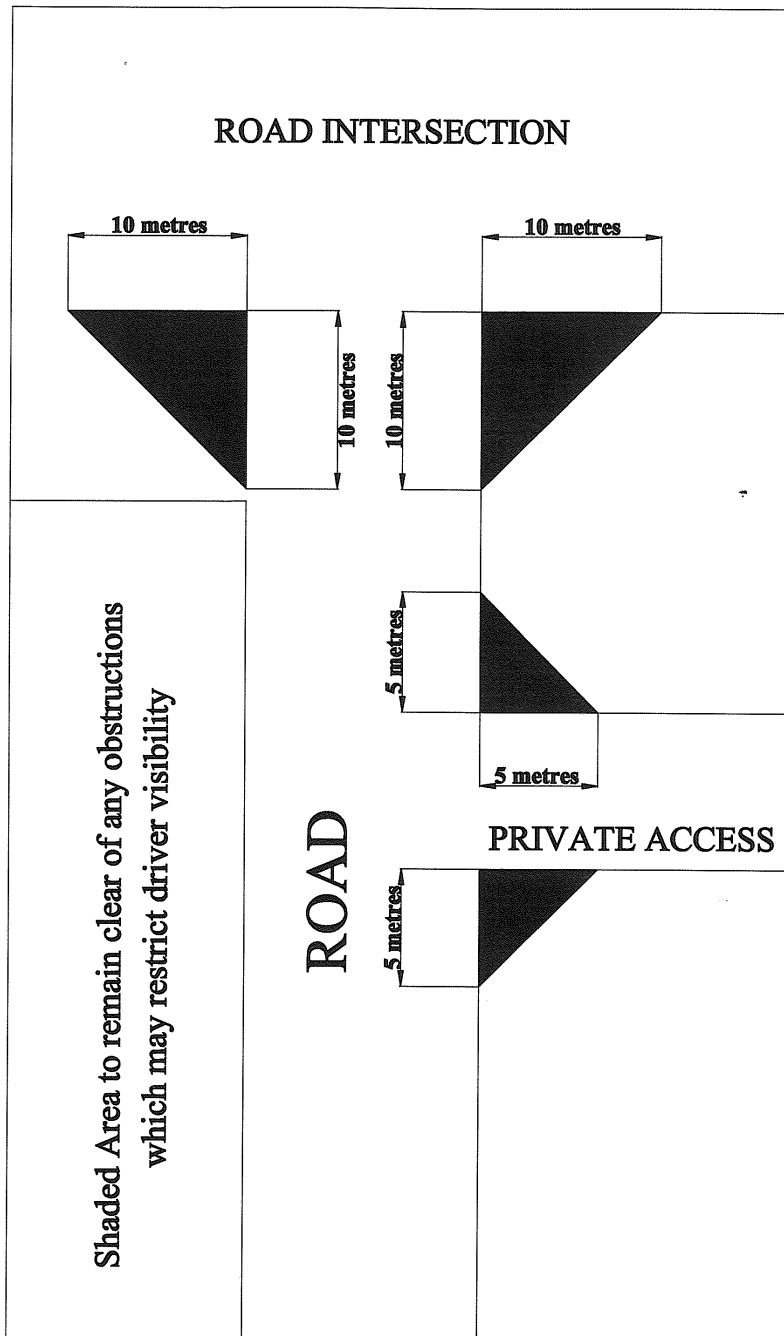


DIAGRAM A - ROAD AND PROPERTY ACCESS SPLAYS

3.2. Tree Selection

Appropriate selection of tree species prior to planting is essential and shall take account of maximum expected tree height, root span, site tolerance, maintenance, establishment and access to mowing. Species chosen should not spread seeds that can germinate and become a nuisance elsewhere. The two Phoenix Palms flanking Tainui Street in Kawhia seed up to one kilometre away and are a good example of a poor selection decision. Tree species suitable for the Kawhia and Otorohanga are detailed in the two Community Landscape Plans.

3.2.1 Maximum Expected Height

When considering the height of the tree, it is important to consider possible undesirable shade or visibility loss to private properties. Consultation with private property owners is seen as an essential part of acceptance to the proposed planting. Overhead power lines and street lighting splays also need to be considered.

3.2.2 Site Tolerance

Plants used must be able to cope with compacted, poorly drained, urban soils. Where service-free tree planting corridors are available, relief of soil compression prior to planting should be undertaken. This will improve drainage and aeration in the soil. The trees need to tolerate urban conditions of heat, drought, poor drainage, pollution and pedestrian and vandal abuse.

3.2.3 Low Maintenance Planting

Design of planting must be appropriate to its function, the maintenance available and the need to reduce existing maintenance in all areas. This is possible while still creating a planting framework and enhancing the environment. The use of small trees and shrubs tends to close off the private landscape from the street rather than integrating it. This happens because they occupy and obstruct the street space at the critical level for safe visibility and views into or from intersections and private properties. Drivers, pedestrians and domestic viewers are all affected. The result is a maintenance cost to maintain safe visibility and should be avoided.

3.2.4 Establishment

For the first two to three years after planting, trees should normally be staked. This is also the period when most vandal damage occurs on street trees. It requires frequent monitoring of recent planting to quickly rectify any limb or trunk damage, and recording of trees removed for replacement. The establishment period is critical for the long term development and health of all street trees.

3.2.5 Access to Mowing

The mowing of grassed areas on roadside berms and reserve areas is essential to the up keep and presentation of Council areas. Positioning and selection of tree species is vital to the accessibility for continued mowing of grassed areas.

3.3 Trees on Private Property Causing a Public Nuisance

Trees and shrubs on private properties sometimes encroach over boundaries and become a nuisance to users of roads and footpaths. Where the cost of removing these obstructions is estimated to be less than \$50.00, Council will request in writing the property occupier remove them within 14 days or Council will remove them at no charge to the occupier. Where the cost to remove these obstructions is estimated to be more than \$50.00, Council will again request the occupier remove them within 14 days or that they will be removed and the cost recovered from the occupier. The trimming of hedges often falls into this category.

4. TREES GENERAL

4.1 Community Landscape Plans

Both the Otorohanga and Kawhia townships have approved Community Landscape Plans. These plans declare in broad terms the desired outcomes of planned tree planting. They include the street location of planting and tree types and the rationale for selecting a particular tree species is explained.

These plans are revised regularly and public submissions are called and considered. This is the best opportunity for the public to be involved in the planning of our tree planting in our towns.

4.2 Public Consultation and Notification

Public consultation and notification are important legal requirements in local government planning. The planning of landscape development and tree planting are no exception.

Public submissions shall be called for during the revision of the Landscape Plans and public notification shall be made when trees are felled in circumstances other than emergency hazard mitigation. In such circumstances the relevant Community Board shall make the final decisions.

In new streets or subdivisions tree planting not covered in the Landscape Plans is to be approved first by Council's landscape design consultant and then the relevant Community Board. Residents or property occupiers will be notified that a tree will be planted outside their property and they can recommend the desired location within the guidelines set out in Section 3. Residents or property occupiers do not have the right to exclude a tree outside their property but can make submissions to the Community Board who shall make the final decision.

4.3 Tree Maintenance

Trees need to be managed and maintained to keep or develop desired shapes. The shape and form of a tree is managed not only for aesthetic presentation but for the health of the tree, prevention of damage and disease, and more difficult management later. Street trees in particular need to be pruned also to prevent intrusions onto the roadway and footpaths. This work is done annually in mid-winter before bud-burst. Tree care is specialised work and in most circumstances shall only be carried out by qualified arborists.

4.4 Removing Trees

There are times when trees need to be felled. They can be damaged in strong winds, by fire, by vandalism or disease, and be left in a hazardous state. If damaged trees are posing an obvious hazard to people or property they shall be felled as soon as possible. If there is some doubt about the safety of a damaged mature tree over 5 metres high a qualified arborist shall be consulted.

Some trees can outgrow their space and damage or pose a risk to services, roading, private or public property, or cause other nuisance. In such cases the proposed removal of one or more trees of 5 metres or more in height in an urban area shall be considered by the relevant Community Board, who shall determine whether public consultation is required before a final decision is made.

Similar consideration shall also be applied to any tree planted for memorial purposes, a record of which is contained in a register kept by Council.

Younger, immature trees may be removed without consultation. This typically occurs when trees are vandalised or it becomes apparent that the tree is not suited to that location.

Removal and disposal of large trees shall only be carried out by qualified staff or outside contractors. This hazardous work is also a notifiable activity and the Labour Department shall be notified as required before work commences. All safety procedures, including a Safety Plan and Temporary Traffic Management Plan, must be prepared and strictly adhered to.

4.5 New Urban Subdivisions

Otorohanga District Council employs Hamilton City Council's *'Hamilton City Development Manual'* as a guideline in respect of development standards. This comprehensive and up-to-date manual has well defined policies and engineering designs, and shall be used for the planning of tree planting in any new subdivisions in the District.

4.6 Protected Trees

It is proposed that there will be provision in the revised District Plan for the protection of significant trees in the Otorohanga District. These trees can be on private or public land, and can be individual specimens or significant groups of trees.

Trees can have historic or cultural value that is associated with or commemorates historic events. The Kahikatea tree known as 'Huiputea' and 'Lord Bledisloe's Chestnut' are good examples. Some trees can have spiritual values such as Kawhia's famous Pohutukawa 'Tangi te Korowhiti' and 'Papa o Karewa'. The growing reverence now given to Memorial Park, especially on Anzac Day, and the trees planted to remember those from local communities that died during military service, have a similar value.

Some trees have special botanic or ecological values, the Redwoods and Kauri in Rotary Park are good examples. They may be rare in the region or in New Zealand. Otorohanga District has New Zealand's most southerly Kauri growing naturally in native forests and the ancient Pohutukawa on the Aotea peninsula are the District's only significant cormorant nesting sites.

Other trees are useful landmarks, with the Woolworth's Plane Tree and the Beattie Home Copper Beech being good examples.

4.7 Tree Evaluation

The 'Royal New Zealand Institute of Horticulture' (RNZHI) have developed a standard method of assessing the value of a tree which has been proposed for protection within New Zealand District Plans. This method and application is included in Rule 2.2 of the Hamilton City Development Manual. It is proposed that this be adopted in the revised Otorohanga District Plan.

4.8 Private Commemorative Planting on Public Land

From time to time members of the public wish to plant trees on public land in memory of deceased family or friends.

At present there are a number of trees planted in Council reserves to commemorate people who had no connection to the District and where there is no record of approval been given, for example the Kauri trees in WW2 Memorial Park and in Kawhia Cemetery a Totara tree has been planted with a commemorative plaque. There is a similar planting and plaque in Rotary Park.

Memorial planting on public land shall only be allowed if the deceased has significant connection to the District and / or a strong case is presented to and approved by the relevant Community Board or by Council for the rural area.

References

References contained in this document relate to the following versions of these documents:

Otorohanga Community Landscape Plan 2006

Kawhia Community Landscape Plan 2005

Hamilton City Development Manual: Aug 2007

Otorohanga District Plan: under revision

Information only reports**Ngā pūrongo mōhiohio anake**

DISCLAIMER: The reports attached to this Open Agenda set out recommendations and suggested resolutions only. Those recommendations and suggested resolutions DO NOT represent Ōtorohanga District Council policy until such time as they might be adopted by formal resolution. This Open Agenda may be subject to amendment either by the addition or withdrawal of items contained therein.

Item 30 Kāwhia/Aotea/Ōpārau Concept Plan – Implementation Update
December 2024

To Kāwhia Community Board

From Sahndra Cave, Community Projects Lead

Type **INFORMATION REPORT**

Date 5 December 2024



1. Purpose | Te Kaupapa

1.1. To provide an update on progress with implementing the Kāwhia Aotea Ōpārau Concept Plan (KAŌCP).

2. Executive Summary | Whakarāpopoto Matua

2.1. The KAŌCP projects were prioritised alongside those from the Ōtorohanga Town and Ōtorohanga Rural Concept Plans. Progress with the KAŌ priority projects is presented in Appendix 1, which provides a status update across all the priority projects derived from the three confirmed concept plans.

3. Staff recommendation | Tūtohutanga a ngā Kaimahi

That the Kāwhia Community Board receives the report: Kawhia Aotea Ōpārau Concept Plan – Implementation Update December 2024 (document number 790123).

4. Discussion | He Kōrerorero

4.1. Following the adoption of the KAŌCP in June 2024 the Kāwhia Community Board (KCB) reviewed the projects reflected in the KAŌCP in July 2024 to establish a list of priority projects for Council to consider/confirm as part of an overall prioritised programme covering the three concept plans (KAŌ, Ōtorohanga Town Concept Plan and Ōtorohanga Rural).

4.2. In August 2024 Council confirmed the overall prioritised programme for the three concept plans. In doing so, Council placed a preference on progressing 'shovel ready' projects that could be delivered promptly (i.e. delivering something tangible 'on the ground' rather than producing more plans and strategies).

4.3. Progress in delivering the overall programme, including those projects from the KAŌCP, is presented in the attached table (Appendix 1).

5. Appendices | Ngā āpitihanga

Number	Title	Document number
1	Concept Plans Implementation – Status of Priority Projects – December 2024	

Ōtorohanga District Concept Plans Implementation¹ – Status of Priority Projects – December 2024

	Project	Concept Plan	Status
1.	Ōtorohanga Reserves Strategy and Management Plan	Ōtorohanga Town	Progressing - Draft currently out for public feedback – closing 24 January 2025. Feedback/submissions to be considered in February
2.	Huipūtea Reserve Development Plan	Ōtorohanga Town	Progressing - Development plan included in draft Reserves Strategy
3.	Multi-purpose Community Hub (Concept Review/Due Diligence)	Ōtorohanga Town	Progressing - Awaiting further discussions with Ōtorohanga Club
4.	Interconnected walking/cycling network	Ōtorohanga Town	Progressing – reflected in the Draft Reserves Strategy. Note that walking/cycling is no longer a specific focus/funding area for NZTA
5.	Investigate Business/Industrial Land/Growth areas	Ōtorohanga Town	Progressing – initial scoping but will be considered as part of the District Plan review (subject to the outcome of Government reform of the RMA)
6.	Ōtorohanga Fitness Trail	Ōtorohanga Town	Progressing – stage 1 (training station)
7.	Investigate feasibility of a local Resource Recovery Centre	Ōtorohanga Town	Not started - To be started by 30 June 2025
8.	Explore future of Ōtorohanga swimming pool as part of Community Facilities Asset Management	Ōtorohanga Town	Progressing - Community Facilities Asset Management Plan under development
9.	Ōtorohanga Sports Hub (led by Sport Waikato)	Ōtorohanga Town	Progressing - Clubs are working closer together and the draft Ōtorohanga Reserves Strategy signals options for the development of Island Reserve and the Domain that will enhance collaboration
10.	Te Ara a Waiwaia – Storyboards (led by Mana Whenua)	Ōtorohanga Town	Progressing - Discussions underway with mana whenua
11.	Work with Schools and Community Halls to understand maintenance needs for safe access and parking,	Rural & Kāwhia/Aotea /Ōpārau	Progressing – Being scoped, including reviewing what assessments have been previously undertaken.
12.	Undertake a condition and needs assessment of the community halls and playcentres to understand level of support required.	Rural & Kāwhia/Aotea /Ōpārau	Progressing - Condition/needs assessments (incl cost estimates) largely complete.

¹ Collation of the top ranked projects from the Ōtorohanga Town, Kāwhia/Aotea/Ōpārau and Rural Ōtorohanga Concept Plans

Project Area	Ōtorohanga	Kāwhia/Aotea/Ōpārau	Rural	All
--------------	------------	---------------------	-------	-----

13.	Stocktake and review of reserves	Rural & Kāwhia/Aotea /Ōpārau	Progressing - Stocktake largely complete
14.	Develop Urban Design Plan and Jervois Streetscape Upgrade.	Kāwhia/Aotea/Ōpārau	Not started - Draft RFP to be prepared - procurement process underway prior to Christmas (link in with Omimiti & Aotea Reserves project)
15.	Develop fitness/recreation loop around town/waterfront.	Kāwhia/Aotea/Ōpārau	Progressing – Council supporting community-led consultation
16.	Develop Concept Plan for Omimiti Reserve	Kāwhia/Aotea/Ōpārau	Progressing - Draft RFP prepared – procurement process underway prior to Christmas
17.	Develop Concept Plan for Aotea Beach Reserve	Kāwhia/Aotea/Ōpārau	Progressing - Draft RFP prepared – procurement process underway prior to Christmas (link with Omimiti Reserve)
18.	Investigate need for additional footpaths/cycleways or shared path where roadway is constrained (include as part of sea wall renewal project).	Kāwhia/Aotea/Ōpārau	Consider as part of Urban Design Plan
19.	Support redevelopment opportunities for the Kāwhia Sports Club.	Kāwhia/Aotea/Ōpārau	Progressing – MoU under development
20.	Review Karewa boat ramp access and parking.	Kāwhia/Aotea/Ōpārau	Progressing - Ongoing discussions with landowners
21.	Ōpārau Community Hall – Resilience Project	Kāwhia/Aotea/Ōpārau	Progressing - Discussions ongoing with Hall group, including support to access funding
22.	Consolidate Community Noticeboards	Kāwhia/Aotea/Ōpārau	Progressing - Scoping underway
23.	Upgrade access to Mangatutu 'Reserve'.	Rural	Completed
24.	Develop community facility (Rural Park) on Ōtewa Road providing for Riding for the Disabled (community led).	Rural	Progressing – agreement for land gifting being finalised
25.	Investigate growth opportunities to sustain communities that have existing facilities (halls, schools, playcentres) – Rural Hamlet concept.	Rural	Not started - Being considered as part of the District Plan review (subject to the outcome of Government reform of the RMA)
26.	Cycling Safety Signage – Waikato River Trails Bypass Route	Rural	Signs in place
27.	Climate Change Response Plan (use CCR as a lens over all Council does as well as a stand-alone project)	All	Progressing – Discussions underway with WRC on undertaking risk assessments to support conversations around adaptation and mitigation
28.	Explore Waka Kotahi funding	All	Progressing - There are ongoing discussions with Waka Kotahi/NZTA staff, but the change in

Project Area	Ōtorohanga	Kāwhia/Aotea/Ōpārau	Rural	All
---------------------	-------------------	----------------------------	--------------	------------

			Government focus means funding opportunities are limited
29	Weave Nature through Town (a consideration for all projects involving planting)	All	Progressing - Specific consideration is included in the draft Reserves Strategy and Huipūtea Reserve Development Plan
30	Ōtorohanga Naming Protocol*	All	Progressing - Project scoping underway with mana whenua
31	Establish an enabling regulatory framework/District Plan review	All	Not started - Being considered as part of the District Plan review (subject to the outcome of Government reform of the RMA)
32	Develop/Implement Waste Management and Minimisation Plan for the District to consider needs of all communities.	All	Completed
33	Develop/Implement Economic Development Strategy	All	Progressing - Economic Wellbeing Strategy adopted. Draft Implementation Plan awaiting Council consideration/endorsement
34	Develop a Climate Change Response Plan to address climate risk assessment including flooding, sea level rise and coastal erosion	All	Progressing – Discussions underway with WRC on undertaking risk assessments to support community conversations around adaptation
35	Review flood risk assessment of the Waipā River, Waikato River, Ōpārau River and Awaroa River	All	Scoping discussions planned with WRC
36	Papakāinga framework to support papakāinga development across the district.	All	To be scoped as part of District Plan review
37	Pest control and weed management plan for Council administered/owned land	All	Progressing - Budget provision included in LTP for plant & animal pest control
38	Consider how to celebrate sites of cultural significance*	All	Progressing - Project scoping underway with mana whenua
39	Establish local community civil defence response groups and support the development of their emergency response plan.	All	Emergency Response Plans (ERPs) in place for Ōtorohanga and Kāwhia communities. ERPs could be developed in other communities where the natural hazard risk is high and the ability for the community to self-organise is limited.
40	Community Gardens/Planting	All	To be community led
41	Gateway Signage (Town/Village/District)	All	Progressing - Scoping underway

* Led by mana whenua. In adopting the prioritised programme, Council acknowledged that non-Council led projects could progress at any stage if there was a partner/stakeholder/community willingness to do so.

Project Area	Ōtorohanga	Kāwhia/Aotea/Ōpārau	Rural	All
---------------------	-------------------	----------------------------	--------------	------------

Item 31 Aotea Seawall resource consent renewal update

To Kāwhia Community Board

From Robbie Whiteman, Manager Projects

Type **INFORMATION REPORT**

Date 5 December 2024



1. Purpose | Te kaupapa

- 1.1. To provide a progress report on Ōtorohanga District Council’s (ŌDC) application to renew the resource consent (the consent) for the Aotea Seawall, and an update on the emergency works that took place in August 2024 and the recent slump of the wall east of the August repair.

2. Executive summary | Whakarāpopoto matua

- 2.1. The consent renewal process started in 2022 and is nearing completion. Detailed in this report is an outline of that process and the next steps.
- 2.2. The Aotea settlement has experienced significant coastal erosion since its subdivision in 1963. This erosion has resulted in the shoreline retreating by 120-130 meters between 1963 and 2002, with some areas now over 210 meters inland compared to 1889.
- 2.3. In 2003, ŌDC was granted resource consent to construct a 750-meter wooden seawall with rock armour Coastal Defence Structure/System (CDS), reclaiming approximately 4,000m² of land.
- 2.4. Then in 2023, ŌDC applied for a new 20-year consent to retain the CDS, allowing for repairs, maintenance, and annual monitoring
- 2.5. In August 2024 an emergency repair was carried out on the seawall and now another slump has occurred.
- 2.6. It can be reported that the process to date to continue to have a CDS within the Coastal Marine Area (CMA) is complex and expensive. As detailed within the body of the report considerable costs have been incurred during the consenting process and/or making any significant repair.

3. Staff recommendation | Tūtohutanga a ngā kaimahi

That the Kāwhia Community Board receive the report titled ‘Aotea Seawall resource consent renewal update’ (document number 787014).

4. Discussion | He Kōrerorero

- 4.1. The Aotea settlement has a long history of coastal erosion. Since its subdivision in 1963, the area has faced periodic shoreline erosion, causing the shoreline to retreat landward. Between 1963 and 2002, coastal erosion led to the loss of 120-130 meters of shoreline. Additionally, parts of the current shoreline are now over 210 meters inland compared to the positions recorded in 1889.
- 4.2. The erosion was particularly severe in the late 1960s and 1970s, resulting in the loss of 22 private properties and severe damage to 12 more. In response to the threat to their properties, some landowners attempted to stop the advancing shoreline using various methods, including makeshift devices, retaining walls, and other unconsented structures.
- 4.3. ŌDC, together with the residents of Aotea, sought to replace the 'make-shift' devices and unconsented structures with a continuous CDS. ŌDC applied and was granted a resource consent (ref: AUTH108585 circa 2003), permitting the construction and maintenance of a 750-metre-long wooden seawall with rock armour, and the reclamation of approximately 4,000m² of land within the CMA. This area is located seaward of the mean high water springs line, adjacent to Lawton Drive and Morrison Road in Aotea. The original cost of the structure in 2003 was \$862K.
- 4.4. In January 2023 ŌDC applied to Waikato Regional Council (WRC) to replace the existing consent with a new 20-year consent allowing for the retention of the existing CDS on the reclaimed land along the Aotea foreshore as a discretionary activity. Additionally, it seeks permission to continue accessing the CMA for necessary repairs, maintenance work, and annual monitoring.
- 4.5. The application included an assessment of the environmental effects (AEE) of the CDS on the coastal processes, structural integrity, ecology, natural hazards, public access, amenity, archaeology, and cultural values. All of these assessments were carried out by independent qualified people and all incurred cost. The application also included a condition assessment of the existing coastal protection and beach access structures situated within Aotea Harbour, fronting Lawton Drive.
- 4.6. In February 2023, an ŌDC workshop was held, and the findings of the specialists' reports were presented to ŌDC and Kāwhia Community Board members.
- 4.7. The ŌDC application sought a 20-year consent duration for several reasons:
 - The existing structure can continue to protect the community against natural hazards.
 - Remedial work will extend the functional life of the CDS.
 - Ongoing monitoring will enable ŌDC to undertake repairs and respond to climate change.
 - Remediation and maintenance of the CDS will help ŌDC manage the risks associated with sea level rise and potential coastal inundation.
 - Possible engineering adaptations provide ŌDC with the option to seek further consent from the WRC to upgrade the CDS beyond the 20-year term.
 - In consultation with the community, ŌDC will explore alternatives to hard engineering structures and assess its options before the new consent expires.
 - The public will retain pedestrian and vehicle access to the foreshore via the existing ATV access.

- The timber component of the CDS continues to function as a retaining wall. Its current condition can be fully assessed when the revetment is repaired, and ongoing structural integrity will be monitored throughout the consent duration.
- The design of the existing CDS can be modified to adapt to the effects of climate change.
- Removing the CDS would likely result in further coastal erosion along the foreshore.

Current CDS condition

- 4.8. The condition assessment revealed that the rock revetment is in poor condition and requires remedial work to extend its functional life. The primary issues stem from the poor quality of the rock used. Although the rock is generally of adequate size for its wave exposure, its shape and quality, combined with the placement of only a single layer of primary armour, have led to voids in the slope, rock fracturing, and movement. This has exposed and caused the loss of underlayer rock from the structure. These problems are more pronounced at the lower levels of the revetment and around the timber stairs, where only underlayer rock has been placed behind the recessed steps.
- 4.9. The timber retaining wall could not be fully inspected, but timber in marine environments typically has a design life of 20 years. If the timber at lower levels is exposed, there is a risk of washout if it fails. The timber stairs were assessed as being in poor to very poor condition. Due to the issues mentioned earlier, it is recommended that they be removed and replaced in a different location.
- 4.10. The Condition Assessment identified that to achieve a 20-year functional life of the rock revetment structure, the following would be required:
- Conduct spot repairs to remove fractured rock from the revetment and fill voids with higher quality rock. Restack and regrade where necessary to ensure good interlocking with three points of contact.
 - Remove the timber stairs and place primary armour behind to form a continuous rock revetment. Use this opportunity to inspect the timber retaining wall for defects.
 - Relocate timber stairs to locations that provide beach access through more of the tidal range. Assess the need for four sets of stairs and reinstate them over the primary armour of the revetment.
 - Raise the impermeable crest level to 3.4 mRL over approximately 400 meters of the structure's 850-meter length (measured along the crest) to achieve less than 5 litres per second per meter wave overtopping during a 100-year ARI event over the next 20 years, in areas where properties or roads are located behind the revetment. For the remaining 110 meters of the revetment below 3.4 mRL, higher levels of overtopping may be accepted, or the crest may be protected or widened to provide erosion control.
 - Given the poor quality of the rock that has been placed, the revetment will require continued monitoring and remedial work to achieve a prolonged functional life. Monitoring should include a visual inspection by a coastal engineer and an annual survey.

4.11. On behalf of the Aotea community, ŌDC aims to retain the existing 850-meter long CDS and ATV access for both current and future landowners, as well as to protect the roading infrastructure along Lawton Drive.

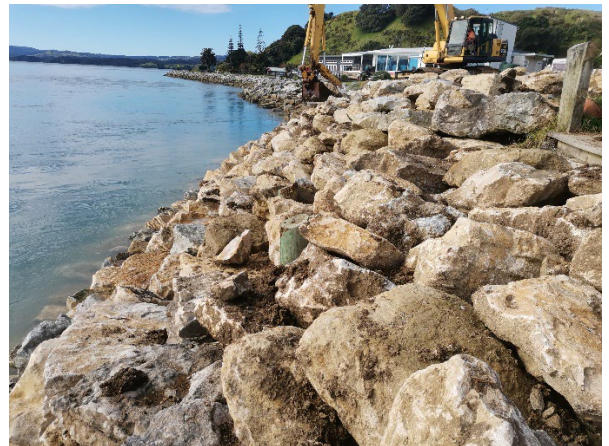
4.12. To ensure the structure continues to provide effective protection against coastal erosion and potential inundation, ŌDC plans to carry out necessary maintenance and repairs. This work will address any damage to the revetment layers caused by weathering and tidal action. It will involve regrading, replacing, and restacking the rocks in the outer armour and infill layers in front of the timber retaining wall. Additionally, the four sets of timber stairs will be removed, and the revetment will be reinstated with a continuous outer rock armour layer.

Emergency repairs and movement of wall

4.13. In May this year ŌDC responded to a relatively sudden slumping of the wall between chainage 200 and 250m. Remedial works cost \$106,000 and were procured on an emergency basis as the failure necessitated. The work involved removal of existing rock armour layer, re-bedding and restacking, including importation of more armour rock to provide structural integrity.



August slump zone



Post Remedial Works

Slumping and loss of rock armour ch. 250 – 350m



4.14. Since the emergency work, further significant slumping has occurred between chainage 250 – 350m. It is ŌDC's intent to procure further remedial work on a sole supplier basis, engaging the same contractor that provided physical works in August. The remedial work is estimated to cost another \$125,000.

Financial Considerations

4.15. The consent renewal process has cost approximately \$117K to date. This is made up of technical reports, staff time, legal costs and consenting costs. The May repairs cost \$106K and there is budget in year 1 of the Long Term plan of for the consent renewal of \$200K, as well as a budget of \$11,500 for maintenance costs in year 1. The consent renewal is funded from internal loans, and the maintenance budget is funded from rates.

4.16. With the changes within the Long Term Plan, it is intended that a portion of the \$730K of Better of Funding will be applied to the overall cost of this project.

4.17. Discussions have also taken place with NZTA in the earlier stages of the renewal process in 2023 that there is the possibility that part of the wall closest to the roadway could be subsidised, however this is not confirmed under the current policy direction and would have to be approved as part of any future discussions with our funding partner.

Resource consent status

4.18. The consent renewal process started in 2022 and ŌDC made an application to WRC for resource consent renewal on the Aotea Seawall in January 2023 as per the statutory deadlines.

4.19. The consent was put on hold while ŌDC completed consultation and replied to further requests for information.

4.20. On 5 November 2024, WRC presented ŌDC with a draft set of consent conditions and have requested ŌDC review these in advance of further internal review. It is likely revisions to the draft conditions will be made before they are finalised.

4.21. Although the conditions are not finalised, they are in line with the recommendations of the conditional assessment to meet a further 20 years of useful life.

4.22. Although the original consent has now expired, ŌDC can legally continue to have the structure in place and maintained under the previous consent conditions while the consent renewal is carried out. Just for clarity the new consent term will be calculated from date of issue.

Engagement with Iwi

4.23. Staff have been communicating and engaging with Ngāti Te Wehi, Ngāti Te Patupō and Ngāti Uakau over this resource consent. These iwi have mana whenua status in Aotea. There has been correspondence and meetings.

4.24. Ngāti Te Wehi has given their written approval for the resource consent, and although Ngāti Te Patupō and Ngāti Uakau requested a meeting to discuss this consent, this has not yet taken place. Staff continue to correspond with representatives from these two iwi to seek a meeting.

Next steps

- 4.25. ŌDC will complete its review of the draft conditions, respond to WRC prior to end of this calendar year, and once this is completed await the outcome of the consent renewal process.
 - 4.26. With the new consent in place, which is anticipated to be in early 2025, staff will then formalise a longer term plan for continued maintenance and monitoring. This plan will inform future budgets.
-

Public excluded**Take matatapu**

There are no reports.

Board Member updates**Ngā kōrero hou a ngā Kaikaunihera**

All Board Members will be invited by the Chairperson to provide a verbal update to the meeting.

Board projects**Project 1: Kāwhia Storyboards****Community Board discretionary fund**

Any decision to allocate the Board's funds must be made to promote the social, economic, environmental, and cultural well-being of the Kāwhia and Aotea community in the present and for the future.

Date of grant	Resolution #	Recipient	Purpose	Amount (excl. GST)
3/10/24	K81	Kāwhia Kai Festival	Event funding	1,000
7/11/24	K86	Kāwhia Kai Festival	Resolution K81 rescinded	-1,000
			Total granted	\$0
			Total remaining	\$5,000

Resolution Register

Previous resolutions of the Kāwhia Community Board which are not yet finalised are outlined below.

Resolution #	Date	Resolution	Staff update
N/A	26/2/21	That a meeting be held with recreational and commercial users of the Kāwhia wharf to discuss: a) costs required to maintain the wharf asset b) the setting of fair and reasonable fees and charges and how these will be collected c) who pays.	There are two phases of this project. The first is the development of an asset management plan for the wharf structure. This phase has been included in a wider project which is currently underway.

			Once completed the Plan will provide guidance for ongoing maintenance costs, and possible replacement of the wharf. Further discussions are anticipated in 2025 about ongoing charges and funding.
4/11/24	K85	<p>That the Kāwhia Community Board recommends the following to Ōtorohanga District Council:</p> <ol style="list-style-type: none"> Approval from Council for the Kāwhia Sports Club (KSC) to rebuild on the previously occupied area of land on the Kāwhia Domain, as specified in the 25 September 2024 site plan, be granted; Granting of a new lease to the KSC be approved, in accordance with the relevant provisions of Council's Occupancy Policy; Council be requested to action granting the new lease at the earliest opportunity; and A draft Memorandum of Understanding (MoU), that clarifies the roles and responsibilities of the KSC and Council in relation to the rebuild, be prepared by Council and presented to the KSC for its consideration and adoption. <p>Councillor Jeffries Deputy Chairperson Whiu</p>	<p>At its meeting on 26 November, Ōtorohanga District Council resolved the following:</p> <p>Resolved C298: That Ōtorohanga District Council:</p> <ol style="list-style-type: none"> Gives approval for Kāwhia Sports Club Inc to construct a new 400m2 building on the same site as the previous building. Instructs the Chief Executive to draft a Memorandum of Understanding which clarifies the roles of Council and the Kāwhia Sports Club in relation to the rebuild of the Sports Club facility, to be with the Kāwhia Sports Club by 30 Nov 2024. Instructs the Chief Executive to draft a lease agreement as per the ŌDC Occupancy Policy to be with the Kāwhia Sports Club by 30 Nov 2024. <p>Councillor Jeffries Councillor Tamaki</p> <p>It is recommended that the Resolution be removed from the Register.</p>

Staff recommendation

That the Kāwhia Community Board confirm the removal of Resolution K85 from the Register.

Closing prayer/reflection/words of wisdom**Karakia/huritao/whakataukī**

The Chairperson will invite a Member to provide the closing words and/or prayer/karakia.

Meeting closure**Katinga o te hui**

The Chairperson will declare the meeting closed.

Workshops/briefings

There are no scheduled workshops or briefings.

For use in both opening and closing meetings

A Member will provide the words of their preference or may choose to use the following:

Mā te whakapono	<i>By believing and trusting</i>
Mā te tūmanako	<i>By having faith and hope</i>
Mā te titiro	<i>By looking and searching</i>
Mā te whakarongo	<i>By listening and hearing</i>
Mā te mahi tahi	<i>By working and striving together</i>
Mā te aroha	<i>By all being done with compassion</i>
Ka taea e tātou	<i>We will succeed</i>

For use in blessing food

A Member will provide the words of their preference or may choose to use the following:

Nau mai e ngā hua o te wao	<i>I welcome the gifts of food from the forest</i>
O te ngakinga	<i>From the cultivated gardens</i>
O te wai tai	<i>From the sea</i>
O te wai māori	<i>From the fresh waters</i>
Hei oranga mō tātou	<i>For the goodness of us all</i>
Tūturu whakamaua	<i>Let this be my commitment to all!</i>
Kia tina! Tina! Hui e! Tāiki e!	<i>Drawn together and affirmed!</i>